

Goat Anti-Mouse IgM (Mu chain) antibody, pre-adsorbed (FITC)

Cat. No. GTX04193-06

Host	Goat
Clonality	Polyclonal
Isotype	IgG
Applications	WB, ICC/IF, IHC-P, IHC-Fr, FCM, ELISA, Activation, ELISPOT
Reactivity	Mouse

Package
1 mg

Applications

Application Note

*Optimal dilutions/concentrations should be determined by the researcher.

Suggested dilution	Recommended dilution
WB	Assay dependent
ICC/IF	Assay dependent
IHC-P	Assay dependent
IHC-Fr	Assay dependent
FCM	$\leq 1 \mu\text{g}/10^6\text{cells}$
ELISA	1:100-1:400
Activation	Assay dependent
ELISPOT	Assay dependent

Note : The suggested use of these reagents is in a final volume of 100 μl .

Not tested in other applications.

Product Note Pre-adsorbed with Mouse IgG and IgA. May react with immunoglobulins from other species.

Properties

Form	Liquid
Buffer	PBS
Preservative	0.09% sodium azide
Storage	Store as concentrated solution. Centrifuge briefly prior to opening vial. Store at 4°C. Protect from light.
Concentration	1 mg/ml (Please refer to the vial label for the specific concentration.)
Immunogen	Pooled antisera from goats hyperimmunized with mouse IgM
Purification	Purified by antigen-affinity chromatography



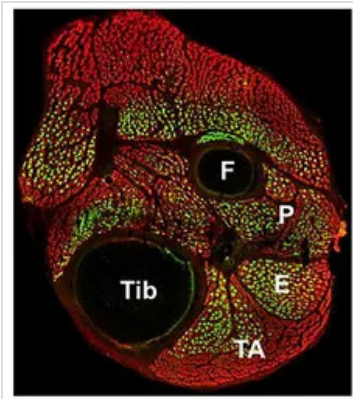
For full product information, images and publications, please visit our [website](#).

Conjugation

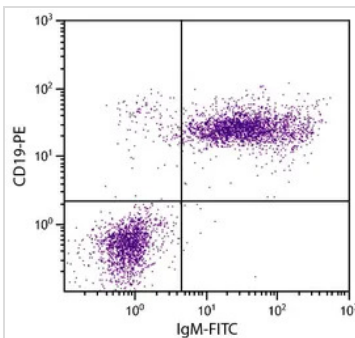
 Fluorescein isothiocyanate (FITC) [Wavelength](#)
Note

For laboratory research use only. Not for any clinical, therapeutic, or diagnostic use in humans or animals. Not for animal or human consumption.

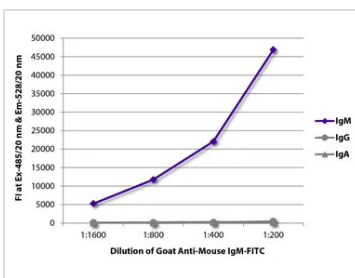
Purchasers shall not, and agree not to enable third parties to, analyze, copy, reverse engineer or otherwise attempt to determine the structure or sequence of the product.

DATA IMAGES

GTX04193-06 IHC-Fr Image

IHC-Fr analysis of mouse skeletal muscle tissue using myosin heavy chain antibody and myosin heavy chain type I antibody followed by GTX04193-06 Goat Anti-Mouse IgM (Mu chain) antibody, pre-adsorbed (FITC) and Goat Anti-Mouse IgG antibody, pre-adsorbed (Alexa Fluor 555).


GTX04193-06 FCM Image

FACS analysis of BALB/c mouse splenocytes using Rat Anti-Mouse CD19 antibody (PE) and GTX04193-06 Goat Anti-Mouse IgM (Mu chain) antibody, pre-adsorbed (FITC).


GTX04193-06 ELISA Image

ELISA analysis of purified mouse immunoglobulins using serially diluted GTX04193-06 Goat Anti-Mouse IgM (Mu chain) antibody, pre-adsorbed (FITC).


 For full product information, images and publications, please visit our [website](#).