

# Goat Anti-Mouse IgM (Mu chain) antibody, F(ab')<sub>2</sub> fragment, pre-adsorbed (Biotin)

## Cat. No. GTX04194-02

<b>Host</b>	Goat
<b>Clonality</b>	Polyclonal
<b>Isotype</b>	IgG F(ab') <sub>2</sub>
<b>Applications</b>	ICC/IF, IHC-P, IHC-Fr, FCM, ELISA, Activation, Purification
<b>Reactivity</b>	Mouse

### Package

500 µg

## Applications

### Application Note

\*Optimal dilutions/concentrations should be determined by the researcher.

Suggested dilution	Recommended dilution
ICC/IF	Assay dependent
IHC-P	Assay dependent
IHC-Fr	Assay dependent
FCM	≤ 1 µg/10 <sup>6</sup> cells
ELISA	1:5000-1:10000
Activation	Assay dependent
Purification	Assay dependent

**Note : The suggested use of these reagents is in a final volume of 100µl.**

Not tested in other applications.

### Product Note

Pre-adsorbed with Mouse IgG and IgA; human immunoglobulins and pooled sera. May react with immunoglobulins from other species.

## Properties

<b>Form</b>	Liquid
<b>Buffer</b>	PBS
<b>Preservative</b>	0.09% sodium azide
<b>Storage</b>	Store as concentrated solution. Centrifuge briefly prior to opening vial. Store at 4°C.
<b>Concentration</b>	0.5 mg/ml (Please refer to the vial label for the specific concentration.)
<b>Immunogen</b>	Pepsin digest of Goat Anti-Mouse IgM.
<b>Purification</b>	Purified IgG



For full product information, images and publications, please visit our [website](#).

**Conjugation**

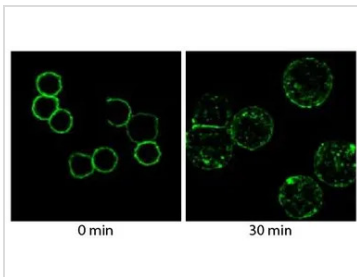
Biotin

**Note**

For laboratory research use only. Not for any clinical, therapeutic, or diagnostic use in humans or animals. Not for animal or human consumption.

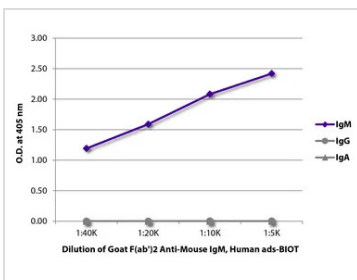
Purchasers shall not, and agree not to enable third parties to, analyze, copy, reverse engineer or otherwise attempt to determine the structure or sequence of the product.

DATA IMAGES



**GTX04194-02 ICC/IF Image**

ICC/IF analysis of BAL17 cells stably expressing T-tagged mouse CMTM7 protein using GTX04194-02 Goat Anti-Mouse IgM (Mu chain) antibody, F(ab')<sub>2</sub> fragment, pre-adsorbed (Biotin) followed by Streptavidin (FITC).



**GTX04194-02 ELISA Image**

ELISA analysis of purified mouse immunoglobulins using serially diluted GTX04194-02 Goat Anti-Mouse IgM (Mu chain) antibody, F(ab')<sub>2</sub> fragment, pre-adsorbed (Biotin) followed by Streptavidin (HRP).



For full product information, images and publications, please visit our [website](#).