

Goat Anti-Mouse kappa light chain antibody, pre-adsorbed (Biotin)

Cat. No. GTX04201-02

Host	Goat
Clonality	Polyclonal
Isotype	IgG
Application	WB, ICC/IF, IHC-P, IHC-Fr, FACS, IP, ELISA, Activation, ELISPOT
Reactivity	Mouse

Package
1 mg

APPLICATION

Application Note

*Optimal dilutions/concentrations should be determined by the researcher.

Suggested dilution	Recommended dilution
WB	Assay dependent
ICC/IF	Assay dependent
IHC-P	Assay dependent
IHC-Fr	Assay dependent
FACS	$\leq 1 \mu\text{g}/10^6\text{cells}$
IP	Assay dependent
ELISA	1:5000-1:20000
Activation	Assay dependent
ELISPOT	Assay dependent

Note : The suggested use of these reagents is in a final volume of 100 μl .

Not tested in other applications.

Product Note Pre-adsorbed with Mouse λ light chains. May react with κ light chains from other species.

PROPERTIES

Form	Liquid
Buffer	PBS
Preservative	0.09% sodium azide
Storage	Store as concentrated solution. Centrifuge briefly prior to opening vial. Store at 4°C.
Concentration	0.5 mg/ml (Please refer to the vial label for the specific concentration.)
Immunogen	Pooled antisera from goats hyperimmunized with mouse κ light chains



For full product information, images and publications, please visit our [website](#).

Purification Purified by antigen-affinity chromatography

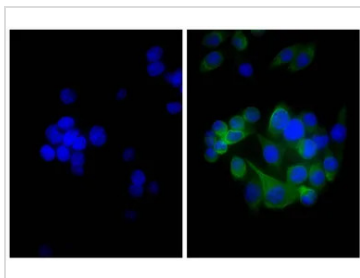
Conjugation Biotin

Note

For laboratory research use only. Not for any clinical, therapeutic, or diagnostic use in humans or animals. Not for animal or human consumption.

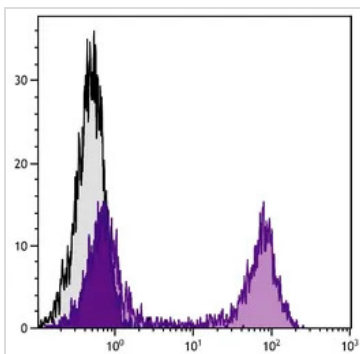
Purchasers shall not, and agree not to enable third parties to, analyze, copy, reverse engineer or otherwise attempt to determine the structure or sequence of the product.

DATA IMAGES



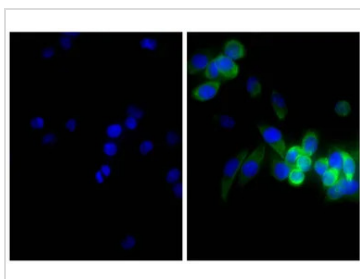
GTX04201-02 ICC/IF Image

ICC/IF analysis of MIA PaCa-2 cells using Mouse Anti-Cytokeratin 18 antibody followed by GTX04201-02 Goat Anti-Mouse kappa light chain antibody, pre-adsorbed (Biotin) and Streptavidin (FITC).



GTX04201-02 FACS Image

FACS analysis of BALB/c mouse splenocytes using GTX04201-02 Goat Anti-Mouse kappa light chain antibody, pre-adsorbed (Biotin) followed by Streptavidin (FITC).



GTX04201-02 ICC/IF Image

ICC/IF analysis of MIA PaCa-2 cells using Mouse Anti-Cytokeratin 18 antibody followed by GTX04201-02 Goat Anti-Mouse kappa light chain antibody, pre-adsorbed (Biotin) and Streptavidin (FITC).



For full product information, images and publications, please visit our [website](#).