

Goat Anti-Mouse lambda light chain antibody, pre-adsorbed (Biotin)

Cat. No. GTX04203-02

Host	Goat
Clonality	Polyclonal
Isotype	IgG
Applications	WB, ICC/IF, IHC-P, IHC-Fr, FCM, IP, ELISA, Activation, ELISPOT
Reactivity	Mouse

Package

1 mg

Applications

Application Note

*Optimal dilutions/concentrations should be determined by the researcher.

Suggested dilution	Recommended dilution
WB	Assay dependent
ICC/IF	Assay dependent
IHC-P	Assay dependent
IHC-Fr	Assay dependent
FCM	$\leq 1 \mu\text{g}/10^6\text{cells}$
IP	Assay dependent
ELISA	1:5000-1:20000
Activation	Assay dependent
ELISPOT	Assay dependent

Note : The suggested use of these reagents is in a final volume of 100 μl .

Not tested in other applications.

Product Note Pre-adsorbed with Mouse κ light chains. May react with λ light chains from other species.

Properties

Form	Liquid
Buffer	PBS
Preservative	0.09% sodium azide
Storage	Store as concentrated solution. Centrifuge briefly prior to opening vial. Store at 4°C.
Concentration	0.5 mg/ml (Please refer to the vial label for the specific concentration.)
Immunogen	Pooled antisera from goats hyperimmunized with mouse λ light chains



For full product information, images and publications, please visit our [website](#).

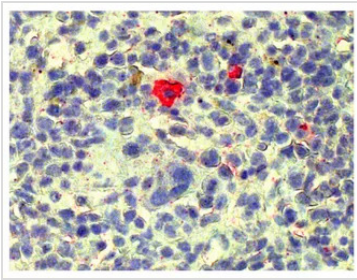
Purification Purified by antigen-affinity chromatography

Conjugation Biotin

For laboratory research use only. Not for any clinical, therapeutic, or diagnostic use in humans or animals. Not for animal or human consumption.

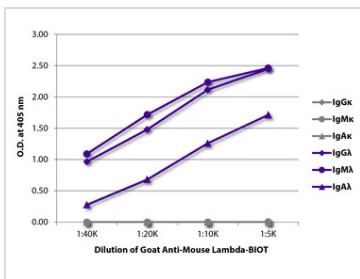
Note Purchasers shall not, and agree not to enable third parties to, analyze, copy, reverse engineer or otherwise attempt to determine the structure or sequence of the product.

DATA IMAGES



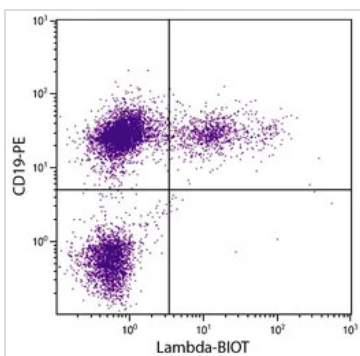
GTX04203-02 IHC-P Image

IHC-P analysis of mouse spleen tissue using GTX04203-02 Goat Anti-Mouse lambda light chain antibody, pre-adsorbed (Biotin) followed by Streptavidin (AP).



GTX04203-02 ELISA Image

ELISA analysis of purified mouse immunoglobulins using serially diluted GTX04203-02 Goat Anti-Mouse lambda light chain antibody, pre-adsorbed (Biotin) followed by Streptavidin (HRP).



GTX04203-02 FCM Image

FACS analysis of BALB/c mouse splenocytes using Rat Anti-Mouse CD19 antibody (PE) and GTX04203-02 Goat Anti-Mouse lambda light chain antibody, pre-adsorbed (Biotin) followed by Streptavidin (FITC).



For full product information, images and publications, please visit our [website](#).