

# Goat Anti-Mouse lambda light chain antibody, pre-adsorbed (PE)

**Cat. No. GTX04203-08**

<b>Host</b>	Goat
<b>Clonality</b>	Polyclonal
<b>Isotype</b>	IgG
<b>Applications</b>	WB, ICC/IF, IHC-P, IHC-Fr, FCM, IP, ELISA, Activation, ELISPOT
<b>Reactivity</b>	Mouse

**Package**  
500 µg

## Applications

### Application Note

\*Optimal dilutions/concentrations should be determined by the researcher.

Suggested dilution	Recommended dilution
WB	Assay dependent
ICC/IF	Assay dependent
IHC-P	Assay dependent
IHC-Fr	Assay dependent
FCM	$\leq 0.1 \mu\text{g}/10^6\text{cells}$
IP	Assay dependent
ELISA	$\leq 1 \mu\text{g}/\text{mL}$
Activation	Assay dependent
ELISPOT	Assay dependent

**Note : The suggested use of these reagents is in a final volume of 100µl.**

Not tested in other applications.

**Product Note** Pre-adsorbed with Mouse  $\kappa$  light chains. May react with  $\lambda$  light chains from other species.

## Properties

<b>Form</b>	Liquid
<b>Buffer</b>	PBS, a stabilizer
<b>Preservative</b>	0.09% sodium azide
<b>Storage</b>	Store as concentrated solution. Centrifuge briefly prior to opening vial. Store at 4°C. DO NOT FREEZE. Protect from light.
<b>Concentration</b>	0.5 mg/ml (Please refer to the vial label for the specific concentration.)
<b>Immunogen</b>	Pooled antisera from goats hyperimmunized with mouse $\lambda$ light chains



For full product information, images and publications, please visit our [website](#).

**Purification**

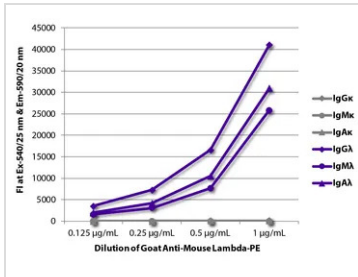
Purified by antigen-affinity chromatography

**Conjugation**

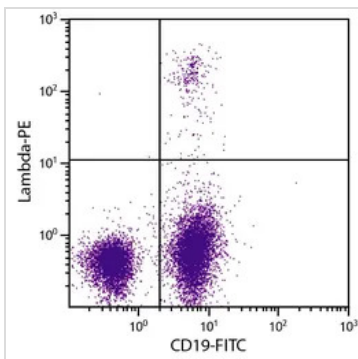
Phycoerythrin (PE) [Wavelength](#)
**Note**

For laboratory research use only. Not for any clinical, therapeutic, or diagnostic use in humans or animals. Not for animal or human consumption.

Purchasers shall not, and agree not to enable third parties to, analyze, copy, reverse engineer or otherwise attempt to determine the structure or sequence of the product.

**DATA IMAGES**

**GTX04203-08 ELISA Image**

ELISA analysis of purified mouse immunoglobulins using serially diluted GTX04203-08 Goat Anti-Mouse lambda light chain antibody, pre-adsorbed (PE).


**GTX04203-08 FCM Image**

FACS analysis of BALB/c mouse splenocytes using Rat Anti-Mouse CD19 antibody (FITC) and GTX04203-08 Goat Anti-Mouse lambda light chain antibody, pre-adsorbed (PE).



For full product information, images and publications, please visit our [website](#).