

## Goat Anti-Mouse IgG1 (Heavy chain) antibody, pre-adsorbed (APC-Cy7)

## Cat. No. GTX04204-15

<b>Host</b>	Goat
<b>Clonality</b>	Polyclonal
<b>Isotype</b>	IgG
<b>Applications</b>	WB, ICC/IF, IHC-P, IHC-Fr, IHC-Wm, FCM, ELISA, EM, ELISPOT, Multiplexing
<b>Reactivity</b>	Mouse

Package  
250 µg

## Applications

## Application Note

\*Optimal dilutions/concentrations should be determined by the researcher.

Suggested dilution	Recommended dilution
WB	Assay dependent
ICC/IF	Assay dependent
IHC-P	Assay dependent
IHC-Fr	Assay dependent
IHC-Wm	Assay dependent
FCM	≤ 0.1 µg/10 <sup>6</sup> cells
ELISA	Assay dependent
EM	Assay dependent
ELISPOT	Assay dependent
Multiplexing	Assay dependent

**Note : The suggested use of these reagents is in a final volume of 100µl.**

Not tested in other applications.

## Product Note

It reacts with the heavy chain of mouse IgG1.

Pre-adsorbed with Mouse IgG2a, IgG2b, IgG3, IgM, and IgA; human immunoglobulins and pooled sera. May react with immunoglobulins from other species.

## Properties

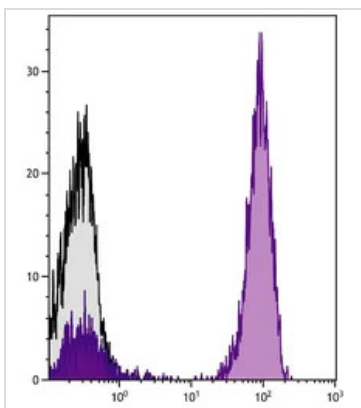
<b>Form</b>	Liquid
<b>Buffer</b>	PBS, a stabilizer
<b>Preservative</b>	0.09% sodium azide
<b>Storage</b>	Store as concentrated solution. Centrifuge briefly prior to opening vial. Store at 4°C. DO NOT FREEZE. Protect from light.



For full product information, images and publications, please visit our [website](#).

<b>Concentration</b>	0.25 mg/ml (Please refer to the vial label for the specific concentration.)
<b>Immunogen</b>	Pooled antisera from goats hyperimmunized with mouse IgG1
<b>Purification</b>	Purified by antigen-affinity chromatography
<b>Conjugation</b>	Allophycocyanin-Cyanine7 (APC-Cy7) <a href="#">Wavelength</a>
<b>Note</b>	For laboratory research use only. Not for any clinical, therapeutic, or diagnostic use in humans or animals. Not for animal or human consumption.  Purchasers shall not, and agree not to enable third parties to, analyze, copy, reverse engineer or otherwise attempt to determine the structure or sequence of the product.

DATA IMAGES



**GTX04204-15 FCM Image**

FACS analysis of human peripheral blood lymphocytes using Mouse Anti-Human CD3 antibody followed by GTX04204-15 Goat Anti-Mouse IgG1 (Heavy chain) antibody, pre-adsorbed (APC-Cy7).



For full product information, images and publications, please visit our [website](#).