

Goat Anti-Mouse IgG1 (Heavy chain) antibody, pre-adsorbed (AP)

Cat. No. GTX04205-03

Host	Goat
Clonality	Polyclonal
Isotype	IgG
Applications	ICC/IF, ELISA
Reactivity	Mouse

Package
1 ml

Applications

Application Note

*Optimal dilutions/concentrations should be determined by the researcher.

Suggested dilution	Recommended dilution
ICC/IF	Assay dependent
ELISA	1:2000-1:4000

Not tested in other applications.

Product Note Pre-adsorbed with Mouse IgG2a, IgG2b, IgG3, IgM, and IgA. May react with immunoglobulins from other species.

Properties

Form	Liquid
Buffer	50mM Tris, 1mM MgCl ₂ , 50% Glycerol
Preservative	0.09% sodium azide
Storage	Store as concentrated solution. Centrifuge briefly prior to opening vial. Store at 4°C.
Concentration	Batch dependent (Please refer to the vial label for the specific concentration.)
Immunogen	Pooled antisera from goats hyperimmunized with mouse IgG1
Purification	Purified by antigen-affinity chromatography
Conjugation	Alkaline Phosphatase (AP)

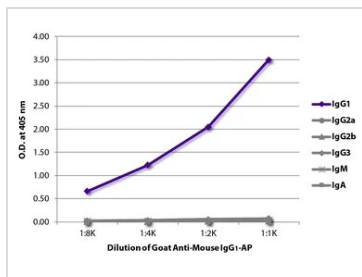
Note

For laboratory research use only. Not for any clinical, therapeutic, or diagnostic use in humans or animals. Not for animal or human consumption.

Purchasers shall not, and agree not to enable third parties to, analyze, copy, reverse engineer or otherwise attempt to determine the structure or sequence of the product.



For full product information, images and publications, please visit our [website](#).

DATA IMAGES

GTx04205-03 ELISA Image

ELISA analysis of purified mouse immunoglobulins using serially diluted GTx04205-03 Goat Anti-Mouse IgG1 (Heavy chain) antibody, pre-adsorbed (AP).



For full product information, images and publications, please visit our [website](https://www.genetex.com).