

## Goat Anti-Mouse IgG2a (Heavy chain) antibody, pre-adsorbed (PE-Cy7)

## Cat. No. GTX04210-10

<b>Host</b>	Goat
<b>Clonality</b>	Polyclonal
<b>Isotype</b>	IgG
<b>Applications</b>	WB, ICC/IF, IHC-P, IHC-Fr, FCM, ELISA, EM, ELISPOT, Purification
<b>Reactivity</b>	Mouse

Package  
250 µg

## Applications

## Application Note

\*Optimal dilutions/concentrations should be determined by the researcher.

Suggested dilution	Recommended dilution
WB	Assay dependent
ICC/IF	Assay dependent
IHC-P	Assay dependent
IHC-Fr	Assay dependent
FCM	$\leq 0.1 \mu\text{g}/10^6\text{cells}$
ELISA	Assay dependent
EM	Assay dependent
ELISPOT	Assay dependent
Purification	Assay dependent

**Note : The suggested use of these reagents is in a final volume of 100µl.**

Not tested in other applications.

## Product Note

Pre-adsorbed with Mouse IgG1, IgG2b, IgG3, IgM, and IgA; human immunoglobulins and pooled sera. May react with immunoglobulins from other species.

## Properties

<b>Form</b>	Liquid
<b>Buffer</b>	PBS, a stabilizer
<b>Preservative</b>	0.09% sodium azide
<b>Storage</b>	Store as concentrated solution. Centrifuge briefly prior to opening vial. Store at 4°C. DO NOT FREEZE. Protect from light.
<b>Concentration</b>	0.25 mg/ml (Please refer to the vial label for the specific concentration.)
<b>Immunogen</b>	Pooled antisera from goats hyperimmunized with mouse IgG2a



For full product information, images and publications, please visit our [website](#).

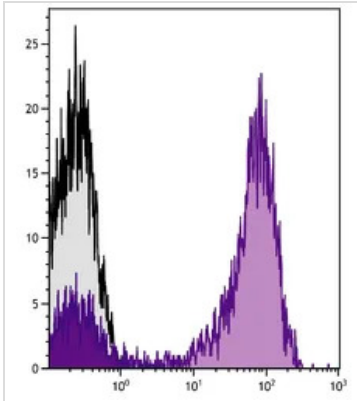
**Purification** Purified by antigen-affinity chromatography

**Conjugation** Phycoerythrin-Cyanine7 (PE-Cy7) [Wavelength](#)

For laboratory research use only. Not for any clinical, therapeutic, or diagnostic use in humans or animals. Not for animal or human consumption.

**Note** Purchasers shall not, and agree not to enable third parties to, analyze, copy, reverse engineer or otherwise attempt to determine the structure or sequence of the product.

#### DATA IMAGES



#### GTX04210-10 FCM Image

FACS analysis of human peripheral blood lymphocytes using Mouse Anti-Human CD5 antibody followed by GTX04210-10 Goat Anti-Mouse IgG2a (Heavy chain) antibody, pre-adsorbed (PE-CY7).



For full product information, images and publications, please visit our [website](#).