

## Goat Anti-Mouse IgG2a (Heavy chain) antibody, pre-adsorbed (TRITC)

## Cat. No. GTX04210-25

<b>Host</b>	Goat
<b>Clonality</b>	Polyclonal
<b>Isotype</b>	IgG
<b>Applications</b>	WB, ICC/IF, IHC-P, IHC-Fr, FCM, ELISA, EM, ELISPOT, Purification
<b>Reactivity</b>	Mouse

## Package

1 mg

## Applications

## Application Note

\*Optimal dilutions/concentrations should be determined by the researcher.

Suggested dilution	Recommended dilution
WB	Assay dependent
ICC/IF	Assay dependent
IHC-P	Assay dependent
IHC-Fr	Assay dependent
FCM	Assay dependent
ELISA	1:100-1:400
EM	Assay dependent
ELISPOT	Assay dependent
Purification	Assay dependent

Not tested in other applications.

## Product Note

Pre-adsorbed with Mouse IgG1, IgG2b, IgG3, IgM, and IgA; human immunoglobulins and pooled sera. May react with immunoglobulins from other species.

## Properties

<b>Form</b>	Liquid
<b>Buffer</b>	PBS
<b>Preservative</b>	0.09% sodium azide
<b>Storage</b>	Store as concentrated solution. Centrifuge briefly prior to opening vial. Store at 4°C. Protect from light.
<b>Concentration</b>	1 mg/ml (Please refer to the vial label for the specific concentration.)
<b>Immunogen</b>	Pooled antisera from goats hyperimmunized with mouse IgG2a
<b>Purification</b>	Purified by antigen-affinity chromatography



For full product information, images and publications, please visit our [website](#).

**Conjugation**

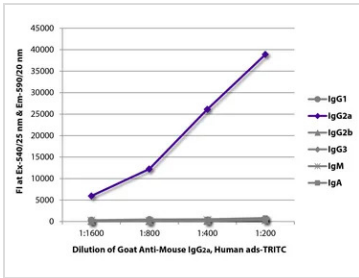
Tetramethylrhodamine (TRITC) [Wavelength](#)

For laboratory research use only. Not for any clinical, therapeutic, or diagnostic use in humans or animals. Not for animal or human consumption.

**Note**

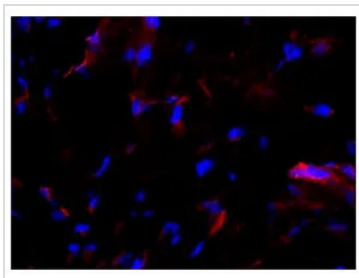
Purchasers shall not, and agree not to enable third parties to, analyze, copy, reverse engineer or otherwise attempt to determine the structure or sequence of the product.

DATA IMAGES



**GTX04210-25 ELISA Image**

ELISA analysis of purified mouse immunoglobulins using serially diluted GTX04210-25 Goat Anti-Mouse IgG2a (Heavy chain) antibody, pre-adsorbed (TRITC).



**GTX04210-25 IHC-Fr Image**

IHC-Fr analysis of horse sacroid tissue using MHC I antibody followed by GTX04210-25 Goat Anti-Mouse IgG2a (Heavy chain) antibody, pre-adsorbed (TRITC).



For full product information, images and publications, please visit our [website](#).