

## Goat Anti-Mouse IgG2b (Heavy chain) antibody, pre-adsorbed (TRITC)

## Cat. No. GTX04214-25

<b>Host</b>	Goat
<b>Clonality</b>	Polyclonal
<b>Isotype</b>	IgG
<b>Applications</b>	WB, ICC/IF, IHC-P, IHC-Fr, IHC-Wm, FCM, ELISA, ELISPOT
<b>Reactivity</b>	Mouse

## Package

1 mg

## Applications

## Application Note

\*Optimal dilutions/concentrations should be determined by the researcher.

Suggested dilution	Recommended dilution
WB	Assay dependent
ICC/IF	Assay dependent
IHC-P	Assay dependent
IHC-Fr	Assay dependent
IHC-Wm	Assay dependent
FCM	Assay dependent
ELISA	1:100-1:400
ELISPOT	Assay dependent

Not tested in other applications.

## Product Note

Pre-adsorbed with Mouse IgG1, IgG2a, IgG3, IgM, and IgA; human immunoglobulins and pooled sera. May react with immunoglobulins from other species.

## Properties

<b>Form</b>	Liquid
<b>Buffer</b>	PBS
<b>Preservative</b>	0.09% sodium azide
<b>Storage</b>	Store as concentrated solution. Centrifuge briefly prior to opening vial. Store at 4°C. Protect from light.
<b>Concentration</b>	1 mg/ml (Please refer to the vial label for the specific concentration.)
<b>Immunogen</b>	Pooled antisera from goats hyperimmunized with mouse IgG2b
<b>Purification</b>	Purified by antigen-affinity chromatography



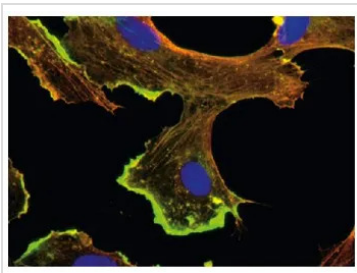
For full product information, images and publications, please visit our [website](#).

**Conjugation**Tetramethylrhodamine (TRITC) [Wavelength](#)**Note**

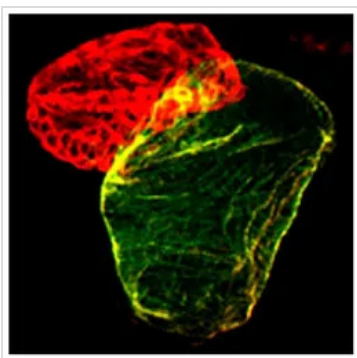
For laboratory research use only. Not for any clinical, therapeutic, or diagnostic use in humans or animals. Not for animal or human consumption.

Purchasers shall not, and agree not to enable third parties to, analyze, copy, reverse engineer or otherwise attempt to determine the structure or sequence of the product.

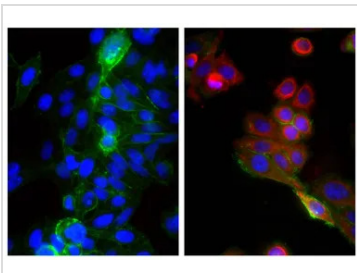
## DATA IMAGES

**GTX04214-25 ICC/IF Image**

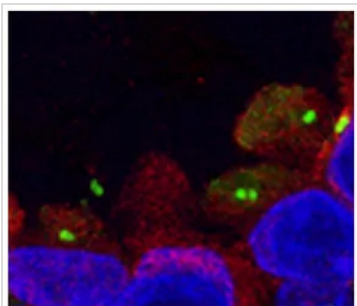
ICC/IF analysis of BMH29L cells using beta actin antibody and actin gamma 1 antibody followed by GTX04214-25 Goat Anti-Mouse IgG2b (Heavy chain) antibody, pre-adsorbed (TRITC) and Goat Anti-Mouse IgG1, pre-adsorbed (FITC).

**GTX04214-25 IHC-Wm Image**

IHC-Wm analysis of zebrafish embryos using atrial myosin heavy chain antibody and sacromeric myosin heavy chain antibody followed by GTX04214-25 Goat Anti-Mouse IgG2b (Heavy chain) antibody, pre-adsorbed (TRITC) and Goat Anti-Mouse IgG1, pre-adsorbed (FITC).

**GTX04214-25 ICC/IF Image**

ICC/IF analysis of HEP-2 cells using Mouse Anti-Cytokeratin 18 antibody and Mouse Anti-Human CD44 antibody (FITC) followed by GTX04214-25 Goat Anti-Mouse IgG2b (Heavy chain) antibody, pre-adsorbed (TRITC).

**GTX04214-25 IHC-P Image**

IHC-P analysis of human breast tissue using acetylated tubulin antibody and gamma tubulin antibody followed by GTX04214-25 Goat Anti-Mouse IgG2b (Heavy chain) antibody, pre-adsorbed (TRITC).



For full product information, images and publications, please visit our [website](#).