

# Goat Anti-Mouse IgG2b (Heavy chain) antibody, pre-adsorbed (AP)

**Cat. No. GTX04217-03**

<b>Host</b>	Goat
<b>Clonality</b>	Polyclonal
<b>Isotype</b>	IgG
<b>Applications</b>	WB, ICC/IF, ELISA
<b>Reactivity</b>	Mouse

**Package**  
1 ml

## Applications

### Application Note

\*Optimal dilutions/concentrations should be determined by the researcher.

Suggested dilution	Recommended dilution
WB	Assay dependent
ICC/IF	Assay dependent
ELISA	1:2000-1:4000

Not tested in other applications.

### Product Note

Pre-adsorbed with Mouse IgG1, IgG2a, IgG3, IgM, and IgA; human, bovine, and horse serum proteins (SP). May react with immunoglobulins from other species.

## Properties

<b>Form</b>	Liquid
<b>Buffer</b>	50mM Tris, 1mM MgCl <sub>2</sub> , 50% Glycerol
<b>Preservative</b>	0.09% sodium azide
<b>Storage</b>	Store as concentrated solution. Centrifuge briefly prior to opening vial. Store at 4°C.
<b>Concentration</b>	Batch dependent (Please refer to the vial label for the specific concentration.)
<b>Immunogen</b>	Pooled antisera from goats hyperimmunized with mouse IgG2b
<b>Purification</b>	Purified by antigen-affinity chromatography
<b>Conjugation</b>	Alkaline Phosphatase (AP)

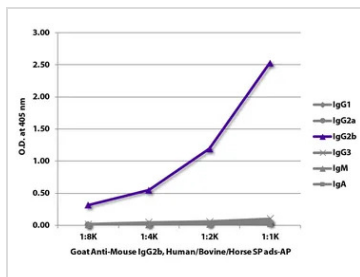
### Note

For laboratory research use only. Not for any clinical, therapeutic, or diagnostic use in humans or animals. Not for animal or human consumption.

Purchasers shall not, and agree not to enable third parties to, analyze, copy, reverse engineer or otherwise attempt to determine the structure or sequence of the product.



For full product information, images and publications, please visit our [website](#).

**DATA IMAGES**

**GTX04217-03 ELISA Image**

ELISA analysis of purified mouse immunoglobulins using serially diluted GTX04217-03 Goat Anti-Mouse IgG2b (Heavy chain) antibody, pre-adsorbed (AP).



For full product information, images and publications, please visit our [website](https://www.genetex.com).