

## Goat Anti-Mouse IgG3 (Heavy chain) antibody, pre-adsorbed (FITC)

**Cat. No. GTX04218-06**

<b>Host</b>	Goat
<b>Clonality</b>	Polyclonal
<b>Isotype</b>	IgG
<b>Applications</b>	WB, ICC/IF, IHC-P, IHC-Fr, FCM, ELISA, ELISPOT
<b>Reactivity</b>	Mouse

**Package**  
1 mg

## Applications

**Application Note**

\*Optimal dilutions/concentrations should be determined by the researcher.

Suggested dilution	Recommended dilution
WB	Assay dependent
ICC/IF	Assay dependent
IHC-P	Assay dependent
IHC-Fr	Assay dependent
FCM	$\leq 1 \mu\text{g}/10^6\text{cells}$
ELISA	1:100-1:400
ELISPOT	Assay dependent

**Note :** The suggested use of these reagents is in a final volume of 100 $\mu\text{l}$ .

Not tested in other applications.

**Product Note** Pre-adsorbed with Mouse IgG1, IgG2a, IgG2b, IgM, and IgA; human immunoglobulins and pooled sera. May react with immunoglobulins from other species.

## Properties

<b>Form</b>	Liquid
<b>Buffer</b>	PBS
<b>Preservative</b>	0.09% sodium azide
<b>Storage</b>	Store as concentrated solution. Centrifuge briefly prior to opening vial. Store at 4°C. Protect from light.
<b>Concentration</b>	1 mg/ml (Please refer to the vial label for the specific concentration.)
<b>Immunogen</b>	Pooled antisera from goats hyperimmunized with mouse IgG3
<b>Purification</b>	Purified by antigen-affinity chromatography



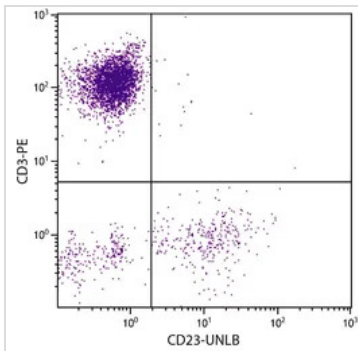
For full product information, images and publications, please visit our [website](#).

**Conjugation**

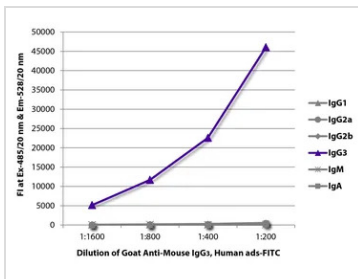
 Fluorescein isothiocyanate (FITC) [Wavelength](#)
**Note**

For laboratory research use only. Not for any clinical, therapeutic, or diagnostic use in humans or animals. Not for animal or human consumption.

Purchasers shall not, and agree not to enable third parties to, analyze, copy, reverse engineer or otherwise attempt to determine the structure or sequence of the product.

**DATA IMAGES**

**GTX04218-06 FCM Image**

FACS analysis of human peripheral blood lymphocytes using Mouse Anti-Human CD23 antibody and Mouse Anti-Human CD3 antibody (PE) followed by GTX04218-06 Goat Anti-Mouse IgG3 (Heavy chain) antibody, pre-adsorbed (FITC).


**GTX04218-06 ELISA Image**

ELISA analysis of purified mouse immunoglobulins using serially diluted GTX04218-06 Goat Anti-Mouse IgG3 (Heavy chain) antibody, pre-adsorbed (FITC).



For full product information, images and publications, please visit our [website](#).