

# Rat Anti-Mouse IgD antibody [11-26]

**Cat. No. GTX04223**

|                     |   |
|---------------------|---|
| <b>Host</b>         | Rat   |
| <b>Clonality</b>    | Monoclonal                                  |
| <b>Isotype</b>      | IgG2a                                       |
| <b>Applications</b> | WB, IHC-P, IHC-Fr, FCM, IP, Activation, PLA |
| <b>Reactivity</b>   | Mouse                                       |

**Package**  
500 µg

## Applications

### Application Note

\*Optimal dilutions/concentrations should be determined by the researcher.

| Suggested dilution | Recommended dilution |
|--------------------|----------------------|
| WB                 | Assay dependent      |
| IHC-P              | Assay dependent      |
| IHC-Fr             | Assay dependent      |
| FCM                | Assay dependent      |
| IP                 | Assay dependent      |
| Activation         | Assay dependent      |
| PLA                | Assay dependent      |

Not tested in other applications.

## Properties

|                      |   |
|----------------------|---|
| <b>Form</b>          | Liquid  |
| <b>Buffer</b>        | Borate buffered saline  |
| <b>Preservative</b>  | No preservatives  |
| <b>Storage</b>       | Store as concentrated solution. Centrifuge briefly prior to opening vial. Store at 4°C. |
| <b>Concentration</b> | 0.5 mg/ml (Please refer to the vial label for the specific concentration.)              |
| <b>Purification</b>  | Purified IgG2a  |
| <b>Conjugation</b>   | Unconjugated  |

### Note

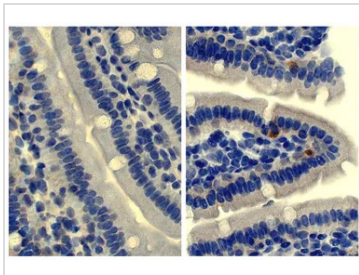
For laboratory research use only. Not for any clinical, therapeutic, or diagnostic use in humans or animals. Not for animal or human consumption.

Purchasers shall not, and agree not to enable third parties to, analyze, copy, reverse engineer or otherwise attempt to determine the structure or sequence of the product.



For full product information, images and publications, please visit our [website](#).

## DATA IMAGES



### GTX04223 IHC-P Image

IHC-P analysis of mouse small intestine tissue using GTX04223 Rat Anti-Mouse IgD antibody [11-26] followed by an HRP conjugated secondary antibody.



For full product information, images and publications, please visit our [website](#).