

Rat Anti-Mouse IgD antibody [11-26] (Biotin)

Cat. No. GTX04223-02

Host	Rat
Clonality	Monoclonal
Isotype	IgG2a
Applications	IHC-P, IHC-Fr, FCM, IP, Activation, PLA
Reactivity	Mouse

Package
500 µg

Applications

Application Note

*Optimal dilutions/concentrations should be determined by the researcher.

Suggested dilution	Recommended dilution
IHC-P	Assay dependent
IHC-Fr	Assay dependent
FCM	$\leq 1 \mu\text{g}/10^6\text{cells}$
IP	Assay dependent
Activation	Assay dependent
PLA	Assay dependent

Note : The suggested use of these reagents is in a final volume of 100µl.

Not tested in other applications.

Properties

Form	Liquid
Buffer	PBS
Preservative	0.09% sodium azide
Storage	Store as concentrated solution. Centrifuge briefly prior to opening vial. Store at 4°C.
Concentration	0.5 mg/ml (Please refer to the vial label for the specific concentration.)
Purification	Purified IgG2a
Conjugation	Biotin

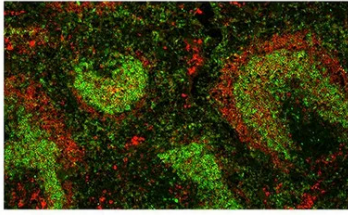
Note

For laboratory research use only. Not for any clinical, therapeutic, or diagnostic use in humans or animals. Not for animal or human consumption.

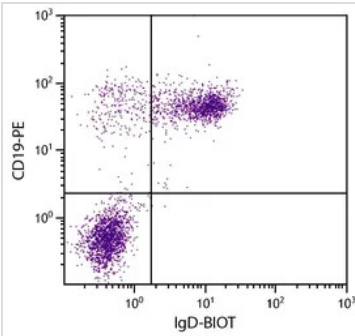
Purchasers shall not, and agree not to enable third parties to, analyze, copy, reverse engineer or otherwise attempt to determine the structure or sequence of the product.



For full product information, images and publications, please visit our [website](#).

DATA IMAGES

GTx04223-02 IHC-Fr Image

IHC-Fr analysis of mouse spleen tissue using Goat Anti-Mouse IgM, pre-absorbed (TxRd) and GTx04223-02 Rat Anti-Mouse IgD antibody [11-26] (Biotin) followed by Streptavidin (Alexa Fluor 488).


GTx04223-02 FCM Image

FACS analysis of BALB/c mouse splenocytes using Rat Anti-Mouse CD19 antibody (PE) and GTx04223-02 Rat Anti-Mouse IgD antibody [11-26] (Biotin) followed by Streptavidin (FITC).



For full product information, images and publications, please visit our [website](#).