

Rat Anti-Mouse IgG1 (Fc) antibody [SB77e] (HRP)

Cat. No. GTX04226-01

Host	Rat
Clonality	Monoclonal
Isotype	IgG2b
Applications	WB, ICC/IF, IHC-P, IHC-Fr, FCM, ELISA
Reactivity	Mouse

Package
1 ml

Applications

Application Note

*Optimal dilutions/concentrations should be determined by the researcher.

Suggested dilution	Recommended dilution
WB	Assay dependent
ICC/IF	Assay dependent
IHC-P	Assay dependent
IHC-Fr	Assay dependent
FCM	Assay dependent
ELISA	1:4000-1:8000

Not tested in other applications.

Product Note

Minimal reactivity to human, goat, and rabbit IgG and human, rat, hamster, bovine, horse, goat, sheep, chicken, guinea pig, donkey, and rabbit serum.

Properties

Form	Liquid
Buffer	PBS, 50% glycerol
Preservative	No preservatives
Storage	Store as concentrated solution. Centrifuge briefly prior to opening vial. Store at 4°C.
Concentration	Batch dependent (Please refer to the vial label for the specific concentration.)
Purification	Purified IgG2b
Conjugation	Horseradish peroxidase(HRP)



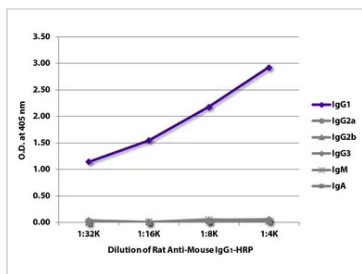
For full product information, images and publications, please visit our [website](#).

For laboratory research use only. Not for any clinical, therapeutic, or diagnostic use in humans or animals. Not for animal or human consumption.

Note

Purchasers shall not, and agree not to enable third parties to, analyze, copy, reverse engineer or otherwise attempt to determine the structure or sequence of the product.

DATA IMAGES



GTx04226-01 ELISA Image

ELISA analysis of purified mouse immunoglobulins using serially diluted GTx04226-01 Rat Anti-Mouse IgG1 (Fc) antibody [SB77e] (HRP).



For full product information, images and publications, please visit our [website](https://www.genetex.com).