

Rat Anti-Mouse lambda light chain antibody [JC5-1] (AP)

Cat. No. GTX04229-03

Host	Rat
Clonality	Monoclonal
Isotype	IgG2b
Applications	IHC-P, IHC-Fr, FCM, IP, ELISA, Activation, PLA
Reactivity	Mouse

Package
1 ml

Applications

Application Note

*Optimal dilutions/concentrations should be determined by the researcher.

Suggested dilution	Recommended dilution
IHC-P	Assay dependent
IHC-Fr	Assay dependent
FCM	Assay dependent
IP	Assay dependent
ELISA	1:1000-1:4000
Activation	Assay dependent
PLA	Assay dependent

Note : Use it on non-reducing condition.

Not tested in other applications.

Properties

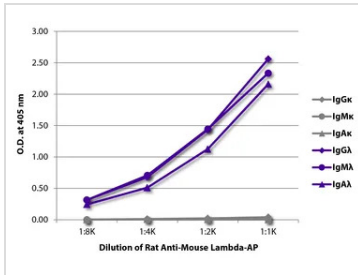
Form	Liquid
Buffer	50mM Tris, 1mM MgCl ₂ , 50% Glycerol
Preservative	0.09% sodium azide
Storage	Store as concentrated solution. Centrifuge briefly prior to opening vial. Store at 4°C.
Concentration	Batch dependent (Please refer to the vial label for the specific concentration.)
Purification	Purified IgG2b
Conjugation	Alkaline Phosphatase (AP)

For full product information, images and publications, please visit our [website](#).

For laboratory research use only. Not for any clinical, therapeutic, or diagnostic use in humans or animals. Not for animal or human consumption.

Note

Purchasers shall not, and agree not to enable third parties to, analyze, copy, reverse engineer or otherwise attempt to determine the structure or sequence of the product.

DATA IMAGES

GTx04229-03 ELISA Image

ELISA analysis of purified mouse immunoglobulins using serially diluted GTx04229-03 Rat Anti-Mouse lambda light chain antibody [JC5-1] (AP).



For full product information, images and publications, please visit our [website](https://www.genetex.com).