

Rat Anti-Mouse IgG2b antibody [SB74g] (FITC)

Cat. No. GTX04231-06

Host	Rat
Clonality	Monoclonal
Isotype	IgG2b
Applications	WB, ICC/IF, FCM, ELISA
Reactivity	Mouse

Package
500 µg

Applications

Application Note

*Optimal dilutions/concentrations should be determined by the researcher.

Suggested dilution	Recommended dilution
WB	Assay dependent
ICC/IF	Assay dependent
FCM	$\leq 1 \mu\text{g}/10^6\text{cells}$
ELISA	1:200-1:400

Note : The suggested use of these reagents is in a final volume of 100µl.

Not tested in other applications.

Properties

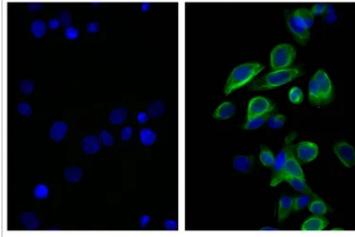
Form	Liquid
Buffer	PBS
Preservative	0.09% sodium azide
Storage	Store as concentrated solution. Centrifuge briefly prior to opening vial. Store at 4°C. Protect from light.
Concentration	0.5 mg/ml (Please refer to the vial label for the specific concentration.)
Immunogen	Mouse IgG2b hybridoma
Purification	Purified IgG2b
Conjugation	Fluorescein isothiocyanate (FITC) Wavelength

Note

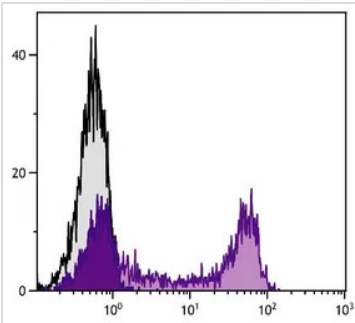
For laboratory research use only. Not for any clinical, therapeutic, or diagnostic use in humans or animals. Not for animal or human consumption.

Purchasers shall not, and agree not to enable third parties to, analyze, copy, reverse engineer or otherwise attempt to determine the structure or sequence of the product.

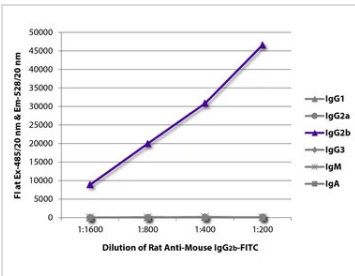
For full product information, images and publications, please visit our [website](#).

DATA IMAGES

GTX04231-06 ICC/IF Image

ICC/IF analysis of MIA PaCa-2 cells using Mouse Anti-Cytokeratin 18 antibody GTX04231-06 Rat Anti-Mouse IgG2b antibody [SB74g] (FITC).


GTX04231-06 FCM Image

FACS analysis of human peripheral blood lymphocytes using Mouse Anti-Human CD45RA antibody followed by GTX04231-06 Rat Anti-Mouse IgG2b antibody [SB74g] (FITC).


GTX04231-06 ELISA Image

ELISA analysis of purified mouse immunoglobulins using serially diluted GTX04231-06 Rat Anti-Mouse IgG2b antibody [SB74g] (FITC).



For full product information, images and publications, please visit our [website](https://www.genetex.com).