

# Rat Anti-Mouse IgG3 antibody [SB76b] (FITC)

**Cat. No. GTX04232-06**

<b>Host</b>	Rat
<b>Clonality</b>	Monoclonal
<b>Isotype</b>	IgG2a
<b>Applications</b>	FCM, ELISA
<b>Reactivity</b>	Mouse

**Package**  
500 µg

## Applications

### Application Note

\*Optimal dilutions/concentrations should be determined by the researcher.

Suggested dilution	Recommended dilution
FCM	$\leq 1 \mu\text{g}/10^6\text{cells}$
ELISA	1:200-1:400

**Note : The suggested use of these reagents is in a final volume of 100µl.**

Not tested in other applications.

## Properties

<b>Form</b>	Liquid
<b>Buffer</b>	PBS
<b>Preservative</b>	0.09% sodium azide
<b>Storage</b>	Store as concentrated solution. Centrifuge briefly prior to opening vial. Store at 4°C. Protect from light.
<b>Concentration</b>	0.5 mg/ml (Please refer to the vial label for the specific concentration.)
<b>Immunogen</b>	Mouse IgG3 hybridoma
<b>Purification</b>	Purified IgG2a
<b>Conjugation</b>	Fluorescein isothiocyanate (FITC) <a href="#">Wavelength</a>

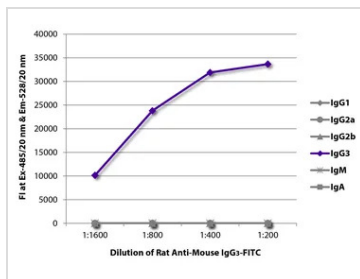
### Note

For laboratory research use only. Not for any clinical, therapeutic, or diagnostic use in humans or animals. Not for animal or human consumption.

Purchasers shall not, and agree not to enable third parties to, analyze, copy, reverse engineer or otherwise attempt to determine the structure or sequence of the product.



For full product information, images and publications, please visit our [website](#).

**DATA IMAGES**

**GTX04232-06 ELISA Image**

ELISA analysis of purified mouse immunoglobulins using serially diluted GTX04232-06 Rat Anti-Mouse IgG3 antibody [SB76b] (FITC).



For full product information, images and publications, please visit our [website](https://www.genetex.com).