

Goat Anti-Rat IgG antibody, F(ab')₂ fragment, pre-adsorbed (R-PE-Cy5)

Cat. No. GTX04233-09

Host	Goat
Clonality	Polyclonal
Isotype	IgG F(ab') ₂
Applications	IHC-Fr, FCM, ELISA
Reactivity	Rat

Package
250 µg

Applications

Application Note

*Optimal dilutions/concentrations should be determined by the researcher.

Suggested dilution	Recommended dilution
IHC-Fr	Assay dependent
FCM	≤ 0.1 µg/10 ⁶ cells
ELISA	Assay dependent

Note : The suggested use of these reagents is in a final volume of 100µl.

Not tested in other applications.

Product Note

Reacts with the heavy and light chains of rat IgG and the light chains of rat IgM. Pre-adsorbed with Mouse immunoglobulins and pooled sera. May react with immunoglobulins from other species

Properties

Form	Liquid
Buffer	PBS, a stabilizer
Preservative	0.09% sodium azide
Storage	Store as concentrated solution. Centrifuge briefly prior to opening vial. Store at 4°C. DO NOT FREEZE. Protect from light.
Concentration	0.25 mg/ml (Please refer to the vial label for the specific concentration.)
Immunogen	Pepsin digest of Goat Anti-Rat IgG(H+L).
Purification	Purified IgG
Conjugation	R-Phycoerythrin-Cyanine5 (R-PE-Cy5) Wavelength

Note

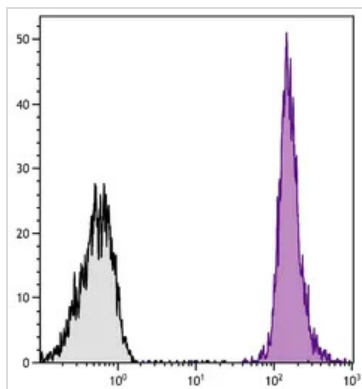
For laboratory research use only. Not for any clinical, therapeutic, or diagnostic use in humans or animals. Not for animal or human consumption.

Purchasers shall not, and agree not to enable third parties to, analyze, copy, reverse engineer or otherwise attempt to determine the structure or sequence of the product.



For full product information, images and publications, please visit our [website](#).

DATA IMAGES


GTX04233-09 FCM Image

FACS analysis of BALB/c mouse splenocytes using Rat Anti-Mouse CD45 antibody followed by GTX04233-09 Goat Anti-Rat IgG antibody, F(ab')₂ fragment, pre-adsorbed (R-PE-Cy5).



For full product information, images and publications, please visit our [website](#).

Date 2026 / 01 / 28 Page 2 of 2