

## SE6L2 antibody

Cat. No. GTX04237

Host	Rabbit
Clonality	Polyclonal
Isotype	IgG
Applications	WB, FCM
Reactivity	Human

Package  
400 µl

## Applications

## Application Note

\*Optimal dilutions/concentrations should be determined by the researcher.

Suggested dilution	Recommended dilution
WB	1:1000
FCM	1:10-1:50

Not tested in other applications.

Calculated MW 98 kDa. ( [Note](#) )

## Properties

Form	Liquid
Buffer	PBS
Preservative	0.09% sodium azide
Storage	Store as concentrated solution. Centrifuge briefly prior to opening vial. For short-term storage (1-2 weeks), store at 4°C. For long-term storage, aliquot and store at -20°C or below. Avoid multiple freeze-thaw cycles.
Concentration	Batch dependent (Please refer to the vial label for the specific concentration.)
Immunogen	KLH conjugated synthetic peptide between 879-907 amino acids from the C-terminal region of human SE6L2.
Purification	Protein A purified followed by peptide affinity purification
Conjugation	Unconjugated

## Note

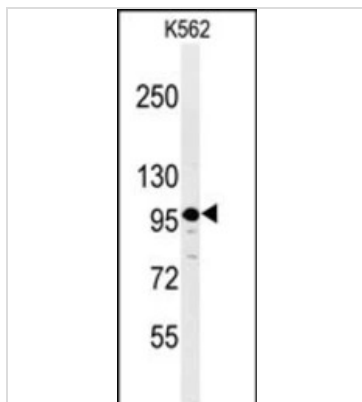
For laboratory research use only. Not for any clinical, therapeutic, or diagnostic use in humans or animals. Not for animal or human consumption.

Purchasers shall not, and agree not to enable third parties to, analyze, copy, reverse engineer or otherwise attempt to determine the structure or sequence of the product.



For full product information, images and publications, please visit our [website](#).

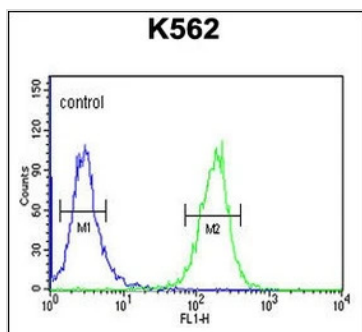
## DATA IMAGES



### GTX04237 WB Image

WB analysis of K562 lysates using GTX04237 SE6L2 antibody.

Loading : 35µg



### GTX04237 FCM Image

FACS analysis of K562 cells (right histogram) compared to a negative control cell (left histogram) using GTX04237 SE6L2 antibody.



For full product information, images and publications, please visit our [website](https://www.genetex.com).