

# GLI3 antibody

**Cat. No. GTX04242**

<b>Host</b>	Rabbit
<b>Clonality</b>	Polyclonal
<b>Isotype</b>	IgG
<b>Applications</b>	WB, IHC-P
<b>Reactivity</b>	Human, Mouse, Rat

**Package**  
100 µl

## Applications

### Application Note

\*Optimal dilutions/concentrations should be determined by the researcher.

Suggested dilution	Recommended dilution
WB	1:500-1:2000
IHC-P	1:50-1:200

Not tested in other applications.

**Calculated MW** 170 kDa. ([Note](#))

## Properties

<b>Form</b>	Liquid
<b>Buffer</b>	PBS, 50% Glycerol
<b>Preservative</b>	0.01% thiomersal
<b>Storage</b>	Store as concentrated solution. Centrifuge briefly prior to opening vial. For short-term storage (1-2 weeks), store at 4°C. For long-term storage, aliquot and store at -20°C or below. Avoid multiple freeze-thaw cycles.
<b>Concentration</b>	Batch dependent (Please refer to the vial label for the specific concentration.)
<b>Immunogen</b>	A synthetic peptide corresponding to a sequence within amino acids 800-900 of human GLI3 (NP_000159.3).
<b>Purification</b>	Purified by affinity chromatography
<b>Conjugation</b>	Unconjugated

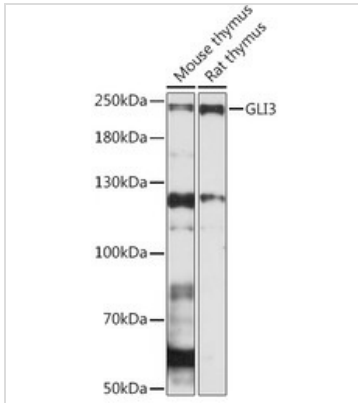
### Note

For laboratory research use only. Not for any clinical, therapeutic, or diagnostic use in humans or animals. Not for animal or human consumption.

Purchasers shall not, and agree not to enable third parties to, analyze, copy, reverse engineer or otherwise attempt to determine the structure or sequence of the product.



For full product information, images and publications, please visit our [website](#).

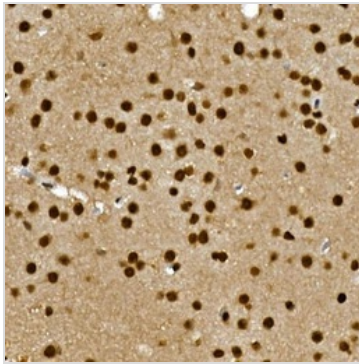
**DATA IMAGES**

**GTx04242 WB Image**

WB analysis of various tissue lysates using GTx0424 GLI3 antibody.

Loading : 25 µg

Dilution : 1:1000

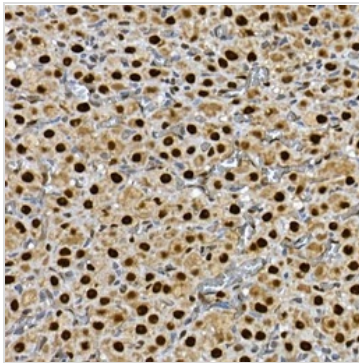
Blocking buffer: 3% nonfat dry milk in TBST


**GTx04242 IHC-P Image**

IHC-P analysis of rat brain tissue using GTx0424 GLI3 antibody.

Antigen retrieval : Perform high pressure antigen retrieval with 10 mM citrate buffer pH 6.0.

Dilution : 1:100


**GTx04242 IHC-P Image**

IHC-P analysis of rat ovary tissue using GTx0424 GLI3 antibody.

Antigen retrieval : Perform high pressure antigen retrieval with 10 mM citrate buffer pH 6.0.

Dilution : 1:100



For full product information, images and publications, please visit our [website](https://www.genetex.com).