

## SGLT1 antibody

Cat. No. GTX04243

<b>Host</b>	Rabbit
<b>Clonality</b>	Polyclonal
<b>Isotype</b>	IgG
<b>Applications</b>	WB, IHC-P
<b>Reactivity</b>	Human, Mouse, Rat, Dog

Package  
100 µl

## Applications

## Application Note

\*Optimal dilutions/concentrations should be determined by the researcher.

Suggested dilution	Recommended dilution
WB	1:300-1:5000
IHC-P	1:200-1:400

Not tested in other applications.

**Calculated MW** 73 kDa. ([Note](#))

## Properties

<b>Form</b>	Liquid
<b>Buffer</b>	10mM TBS, 1% BSA, 50% Glycerol
<b>Preservative</b>	0.03% Proclin300
<b>Storage</b>	Store as concentrated solution. Centrifuge briefly prior to opening vial. For short-term storage (1-2 weeks), store at 4°C. For long-term storage, aliquot and store at -20°C or below. Avoid multiple freeze-thaw cycles.
<b>Concentration</b>	1 mg/ml (Please refer to the vial label for the specific concentration.)
<b>Immunogen</b>	KLH conjugated synthetic peptide derived from mouse SGLT(401-500).
<b>Purification</b>	Protein A purified
<b>Conjugation</b>	Unconjugated

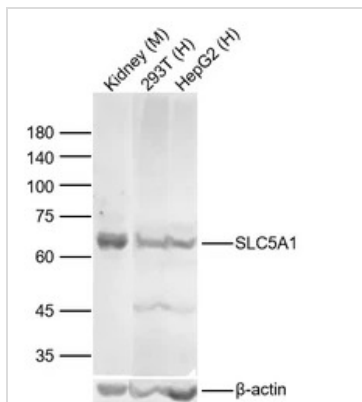
## Note

For laboratory research use only. Not for any clinical, therapeutic, or diagnostic use in humans or animals. Not for animal or human consumption.

Purchasers shall not, and agree not to enable third parties to, analyze, copy, reverse engineer or otherwise attempt to determine the structure or sequence of the product.

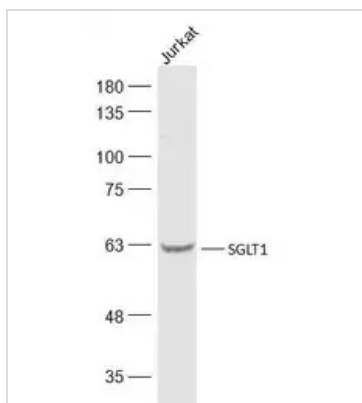


For full product information, images and publications, please visit our [website](#).

**DATA IMAGES**

**GTX04243 WB Image**

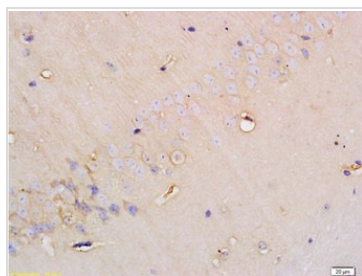
WB analysis of various lysates using GTX04243 SGLT antibody.

Dilution : 1:1000


**GTX04243 WB Image**

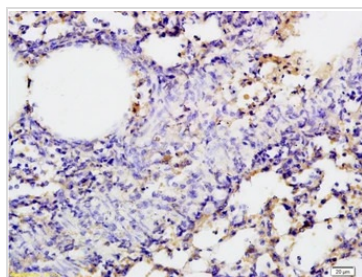
WB analysis of Jurkat lysates using GTX04243 SGLT antibody.

Dilution : 1:500


**GTX04243 IHC-P Image**

IHC-P analysis of rat brain tissue using GTX04243 SGLT antibody.

Dilution : 1:200


**GTX04243 IHC-P Image**

IHC-P analysis of rat lung tissue using GTX04243 SGLT antibody.

Dilution : 1:200



For full product information, images and publications, please visit our [website](#).