

# CIP2A antibody [2G10]

**Cat. No. GTX04245**

<b>Host</b>	Mouse
<b>Clonality</b>	Monoclonal
<b>Isotype</b>	IgG2b
<b>Applications</b>	WB, ICC/IF, IHC-P, FCM, ELISA
<b>Reactivity</b>	Human, Mouse, Rat, Hamster, Monkey

References ( 1 )

Package

100 µl

## Applications

### Application Note

\*Optimal dilutions/concentrations should be determined by the researcher.

Suggested dilution	Recommended dilution
WB	1:1000-1:2000
ICC/IF	1:40
IHC-P	1:100-1:200
FCM	1 µg/1*10 <sup>6</sup>
ELISA	Assay dependent

Not tested in other applications.

**Calculated MW** 102 kDa. ( [Note](#) )

## Properties

<b>Form</b>	Liquid
<b>Buffer</b>	Tris-Glycine, 150mM NaCl
<b>Preservative</b>	0.05% sodium azide
<b>Storage</b>	Store as concentrated solution. Centrifuge briefly prior to opening vial. For short-term storage (1-2 weeks), store at 4°C. For long-term storage, aliquot and store at -20°C or below. Avoid multiple freeze-thaw cycles.
<b>Concentration</b>	1 mg/ml (Please refer to the vial label for the specific concentration.)
<b>Immunogen</b>	A synthetic peptide made to a C-terminal portion of the human CIP2A protein.
<b>Purification</b>	Protein G purified
<b>Conjugation</b>	Unconjugated



For full product information, images and publications, please visit our [website](#).

For laboratory research use only. Not for any clinical, therapeutic, or diagnostic use in humans or animals. Not for animal or human consumption.

## Note

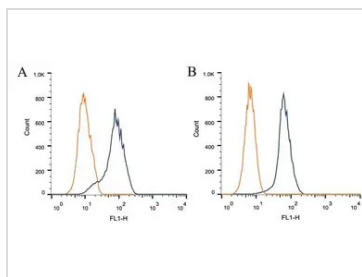
Purchasers shall not, and agree not to enable third parties to, analyze, copy, reverse engineer or otherwise attempt to determine the structure or sequence of the product.

## DATA IMAGES



### GTX04245 WB Image

WB analysis of NIH-3T3 cell lysates using GTX04245 CIP2A antibody [2G10].



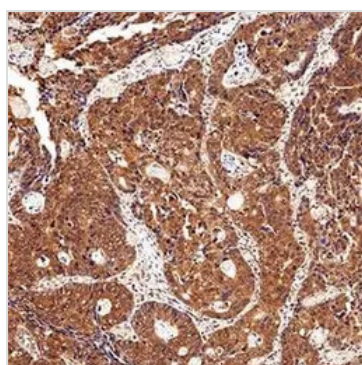
### GTX04245 FCM Image

FACS analysis of CHO (A) and HEK293 (B) cells using GTX04245 CIP2A antibody [2G10].

Antibody amount : 1 µg/106 cells

Blue : Primary antibody

Orange : Isotype control



### GTX04245 IHC-P Image

IHC-P analysis human colon cancer tissue using GTX04245 CIP2A [2G10] on a Bond Rx autostainer (Leica Biosystems).

Antigen retrieval : Heat induced antigen retrieval using 10mM sodium citrate buffer (pH 6.0), 20 minutes

Dilution : 1:200



For full product information, images and publications, please visit our [website](https://www.genetex.com).