

CD155 antibody [5I13D1]

Cat. No. GTX04249

Host	Mouse
Clonality	Monoclonal
Isotype	IgG2a
Applications	WB, IHC-P, FCM
Reactivity	Human, Mouse

Package
100 µg

Applications

Application Note

*Optimal dilutions/concentrations should be determined by the researcher.

Suggested dilution	Recommended dilution
WB	0.25-0.5 µg/mL
IHC-P	2-5 µg/mL
FCM	1-3 µg/1*10 ⁶ cells

Not tested in other applications.

Calculated MW 45 kDa. ([Note](#))

Properties

Form	Liquid
Buffer	4mg Trehalose, 0.9mg NaCl, 0.2mg Na ₂ HPO ₄
Preservative	No preservatives
Storage	Store as concentrated solution. Centrifuge briefly prior to opening vial. For short-term storage (1-2 weeks), store at 4°C. For long-term storage, aliquot and store at -20°C or below. Avoid multiple freeze-thaw cycles.
Concentration	0.5 mg/ml (Please refer to the vial label for the specific concentration.)
Immunogen	E.coli-derived human Poliovirus Receptor/PVR recombinant protein (Position: D28-E331).
Purification	Purified by antigen-affinity chromatography
Conjugation	Unconjugated

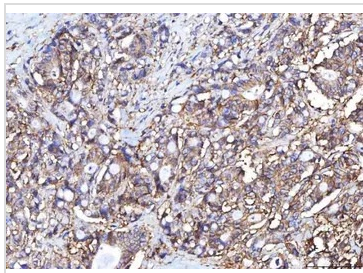
Note

For laboratory research use only. Not for any clinical, therapeutic, or diagnostic use in humans or animals. Not for animal or human consumption.

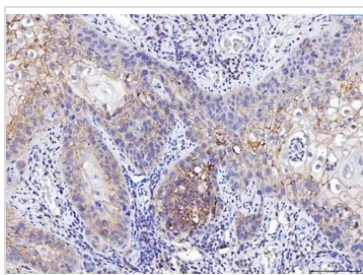
Purchasers shall not, and agree not to enable third parties to, analyze, copy, reverse engineer or otherwise attempt to determine the structure or sequence of the product.



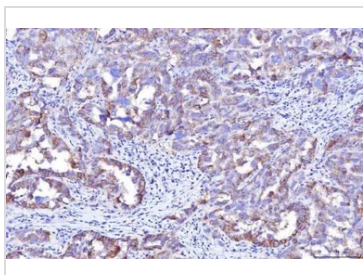
For full product information, images and publications, please visit our [website](#).

DATA IMAGES

GTX04249 IHC-P Image

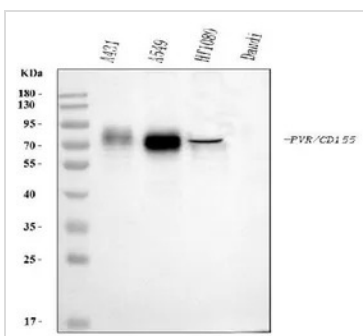
IHC-P analysis of human colorectal adenocarcinoma tissue using GTX04249 CD155 antibody [5I13D1].
Antigen retrieval : Heat mediated antigen retrieval was performed in EDTA buffer (pH 8.0, epitope retrieval solution)
Dilution : 2 µg/mL


GTX04249 IHC-P Image

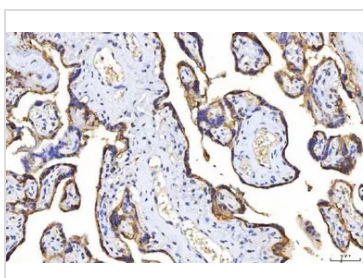
IHC-P analysis of human laryngeal squamous cell carcinoma tissue using GTX04249 CD155 antibody [5I13D1].
Antigen retrieval : Heat mediated antigen retrieval was performed in EDTA buffer (pH 8.0, epitope retrieval solution)
Dilution : 2 µg/mL


GTX04249 IHC-P Image

IHC-P analysis of human ovarian cancer tissue using GTX04249 CD155 antibody [5I13D1].
Antigen retrieval : Heat mediated antigen retrieval was performed in EDTA buffer (pH 8.0, epitope retrieval solution)
Dilution : 2 µg/mL


GTX04249 WB Image

WB analysis of various cell lysates using GTX04249 CD155 antibody [5I13D1].
Loading : 30 µg
Dilution : 0.5 µg/mL


GTX04249 IHC-P Image

IHC-P analysis of human placenta tissue using GTX04249 CD155 antibody [5I13D1].
Antigen retrieval : Heat mediated antigen retrieval was performed in EDTA buffer (pH 8.0, epitope retrieval solution)
Dilution : 2 µg/mL



For full product information, images and publications, please visit our [website](https://www.genetex.com).