

CTIP2 antibody [ARC2329]

Cat. No. GTX04256

Host	Rabbit
Clonality	Monoclonal
Isotype	IgG
Applications	WB, IHC-P
Reactivity	Human, Mouse

Package
100 µl

Applications

Application Note

*Optimal dilutions/concentrations should be determined by the researcher.

Suggested dilution	Recommended dilution
WB	1:500-1:2000
IHC-P	1:50-1:200

Not tested in other applications.

Calculated MW 96 kDa. ([Note](#))

Properties

Form	Liquid
Buffer	PBS, 0.05% BSA, 50% Glycerol
Preservative	0.02% sodium azide
Storage	Store as concentrated solution. Centrifuge briefly prior to opening vial. For short-term storage (1-2 weeks), store at 4°C. For long-term storage, aliquot and store at -20°C or below. Avoid multiple freeze-thaw cycles.
Concentration	Batch dependent (Please refer to the vial label for the specific concentration.)
Immunogen	A synthetic peptide corresponding to a sequence within amino acids 450-550 of human CTIP2/BCL11B (Q9C0K0).
Purification	Purified by affinity chromatography
Conjugation	Unconjugated

Note

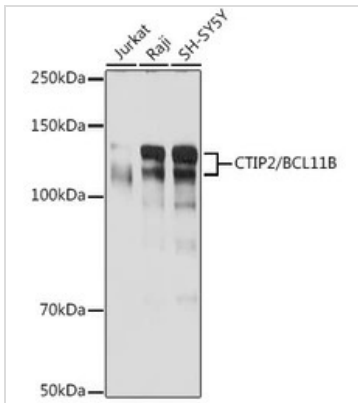
For laboratory research use only. Not for any clinical, therapeutic, or diagnostic use in humans or animals. Not for animal or human consumption.

Purchasers shall not, and agree not to enable third parties to, analyze, copy, reverse engineer or otherwise attempt to determine the structure or sequence of the product.



For full product information, images and publications, please visit our [website](#).

DATA IMAGES

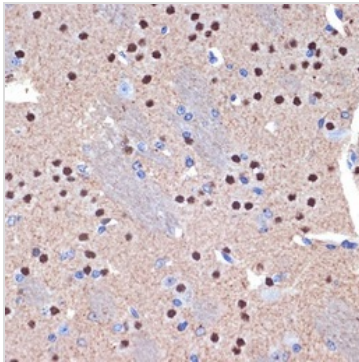


GTX04256 WB Image

WB analysis of various cell lysates using GTX04256 CTIP2 antibody [ARC2329].

Loading : 25 µg

Dilution : 1:1000



GTX04256 IHC-P Image

IHC-P analysis of mouse brain tissue using GTX04256 CTIP2 antibody [ARC2329].

Antigen retrieval : 10 mM Tris/EDTA buffer pH 9.0

Dilution : 1:100



For full product information, images and publications, please visit our [website](https://www.genetex.com).