

EIF5A2 antibody [OTI6G7]

Cat. No. GTX04263

Host	Mouse
Clonality	Monoclonal
Isotype	IgG1
Applications	WB, ICC/IF, IHC-P, FCM
Reactivity	Human, Mouse, Rat

Package
100 µl

Applications

Application Note

*Optimal dilutions/concentrations should be determined by the researcher.

Suggested dilution	Recommended dilution
WB	1:2000
ICC/IF	1:100
IHC-P	1:150
FCM	1:100

Not tested in other applications.

Calculated MW 17 kDa. ([Note](#))

Properties

Form	Liquid
Buffer	PBS, 1% BSA, 50% Glycerol
Preservative	0.02% sodium azide
Storage	Store as concentrated solution. Centrifuge briefly prior to opening vial. For short-term storage (1-2 weeks), store at 4°C. For long-term storage, aliquot and store at -20°C or below. Avoid multiple freeze-thaw cycles.
Concentration	1 mg/ml (Please refer to the vial label for the specific concentration.)
Immunogen	Full length human recombinant protein of human EIF5A2(NP_065123) produced in HEK293T cell.
Purification	Purified by affinity chromatography
Conjugation	Unconjugated

Note

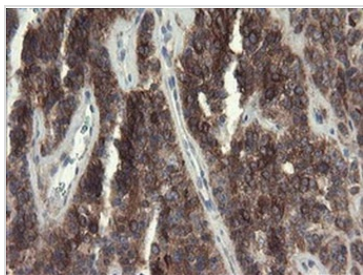
For laboratory research use only. Not for any clinical, therapeutic, or diagnostic use in humans or animals. Not for animal or human consumption.

Purchasers shall not, and agree not to enable third parties to, analyze, copy, reverse engineer or otherwise attempt to determine the structure or sequence of the product.



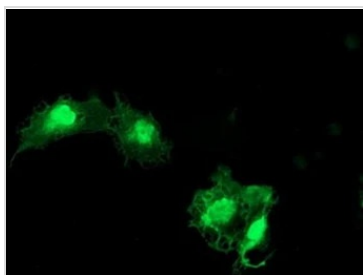
For full product information, images and publications, please visit our [website](#).

DATA IMAGES



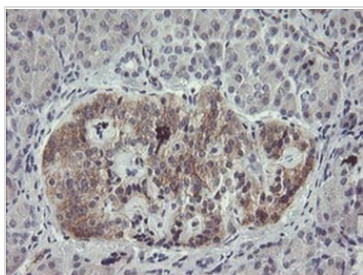
GTX04263 IHC-P Image

IHC-P analysis of human pancreas carcinoma tissue using GTX04263 EIF5A2 antibody [OTI6G7].
 Antigen retrieval : Heat-induced epitope retrieval by 10mM citric buffer, pH 6.0, 100°C for 10min



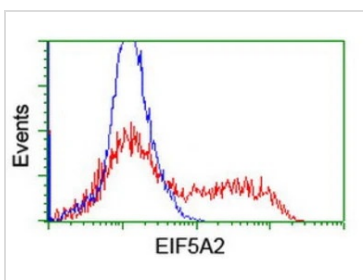
GTX04263 ICC/IF Image

ICC/IF analysis of COS7 cells transfected with human EIF5A2 using GTX04263 EIF5A2 antibody [OTI6G7].



GTX04263 IHC-P Image

IHC-P analysis of human pancreas tissue using GTX04263 EIF5A2 antibody [OTI6G7].
 Antigen retrieval : Heat-induced epitope retrieval by 10mM citric buffer, pH 6.0, 100°C for 10min



GTX04263 FCM Image

FACS analysis of 293T cells transfected with human EIF5A2 using GTX04263 EIF5A2 antibody [OTI6G7].
 Red : 293T cells transfected with control vector
 Blue : 293T cells transfected with human EIF5A2



For full product information, images and publications, please visit our [website](#).