

## Hemoglobin beta antibody [14G2.G11.F11]

Cat. No. GTX04267

Host	Mouse
Clonality	Monoclonal
Isotype	IgG2a
Applications	WB, FCM, ELISA, Lateral Flow
Reactivity	Human

Package  
100 µg

## Applications

## Application Note

\*Optimal dilutions/concentrations should be determined by the researcher.

Suggested dilution	Recommended dilution
WB	1 µg/mL
FCM	Assay dependent
ELISA	1:20000
Lateral Flow	Assay dependent

Not tested in other applications.

Calculated MW	16 kDa. ( <a href="#">Note</a> )
Product Note	This antibody cross reacts with HbA-2 but does not react the HbS, HbF (gamma), or HbC forms.

## Properties

Form	Liquid
Buffer	20mM Potassium Phosphate, 150mM NaCl
Preservative	0.01% sodium azide
Storage	Store as concentrated solution. Centrifuge briefly prior to opening vial. For short-term storage (1-2 weeks), store at 4°C. For long-term storage, aliquot and store at -20°C or below. Avoid multiple freeze-thaw cycles.
Concentration	1.04 mg/ml (Please refer to the vial label for the specific concentration.)
Immunogen	Synthetic peptide corresponding to amino acid residues near the N-terminus of Hb beta-subunit conjugated to KLH.
Purification	Protein A purified From tissue culture supernatant
Conjugation	Unconjugated

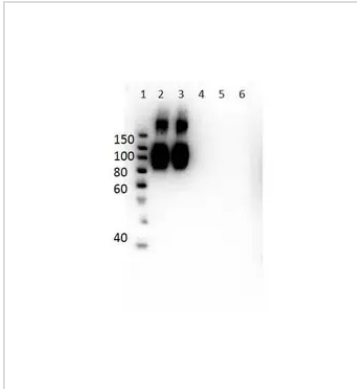


For full product information, images and publications, please visit our [website](#).

For laboratory research use only. Not for any clinical, therapeutic, or diagnostic use in humans or animals. Not for animal or human consumption.

**Note**

Purchasers shall not, and agree not to enable third parties to, analyze, copy, reverse engineer or otherwise attempt to determine the structure or sequence of the product.

**DATA IMAGES**

**GTX04267 WB Image**

WB analysis of various sample lysates using GTX04267 Hemoglobin beta antibody [14G2.G11.F11].

Lane 1 : Prestained molecular weight marker

Lane 2 : HbA peptide conjugated to BSA

Lane 3 : HbA-2 peptide conjugated to BSA

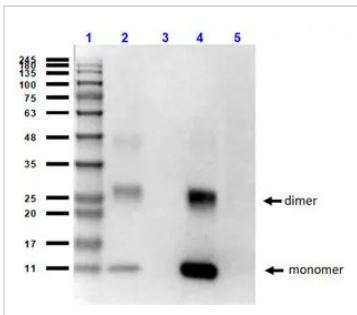
Lane 4 : HbC peptide conjugated to BSA

Lane 5 : HbF peptide conjugated to BSA

Lane 6 : HbS peptide conjugated to BSA

Loading : 50ng per lane

Dilution : 1µg/mL


**GTX04267 WB Image**

WB analysis of various sample lysates using GTX04267 Hemoglobin beta antibody [14G2.G11.F11].

Lane 1 : Prestained molecular weight marker

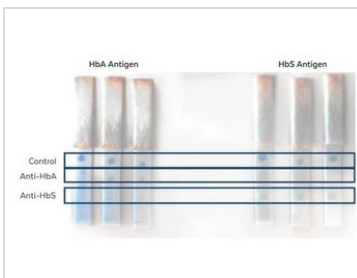
Lane 2 : Human HbA (0.1µg)

Lane 3 : Human HbS (0.1µg)

Lane 4 : Human heart whole cell lysate (2.0µg)

Lane 5 : HeLa cell lysate (10.0µg)

Dilution : 1µg/mL


**GTX04267 Lateral Flow Image**

Lateral flow analysis of recombinant HbA (left group) or HbS (right group) proteins using GTX04267 Hemoglobin beta antibody [14G2.G11.F11] and GTX04268 Hemoglobin beta S antibody [23E5.H6.G6.C1.H7.F7.G9.F6].

Antibody amount : GTX04267 Hemoglobin beta antibody 0.5µL at 250ug/mL and GTX04268 Hemoglobin beta S antibody 0.5µL at 1mg/mL



For full product information, images and publications, please visit our [website](https://www.genetex.com).