

## Hemoglobin beta S antibody [23E5.H6.G6.C1.H7.F7.G9.F6]

Cat. No. GTX04268

Host	Mouse
Clonality	Monoclonal
Isotype	IgG3
Applications	WB, FCM, ELISA, Lateral Flow
Reactivity	Human

Package  
100 µg

## Applications

## Application Note

\*Optimal dilutions/concentrations should be determined by the researcher.

Suggested dilution	Recommended dilution
WB	1 µg/mL
FCM	Assay dependent
ELISA	1:20000
Lateral Flow	Assay dependent

Not tested in other applications.

Calculated MW 16 kDa. ( [Note](#) )

**Product Note** This antibody detect the E6V mutant in the hemoglobin beta subunit and does not react with the HbA, HbF, HbC, or HbA-2 isoform.

## Properties

Form	Liquid
Buffer	20mM Potassium Phosphate, 150mM NaCl
Preservative	0.01% sodium azide
Storage	Store as concentrated solution. Centrifuge briefly prior to opening vial. For short-term storage (1-2 weeks), store at 4°C. For long-term storage, aliquot and store at -20°C or below. Avoid multiple freeze-thaw cycles.
Concentration	1 mg/ml (Please refer to the vial label for the specific concentration.)
Immunogen	Synthetic peptide corresponding to amino acid residues near the N-terminus of Hb beta-subunit conjugated to KLH.
Purification	Protein A purified From tissue culture supernatant
Conjugation	Unconjugated



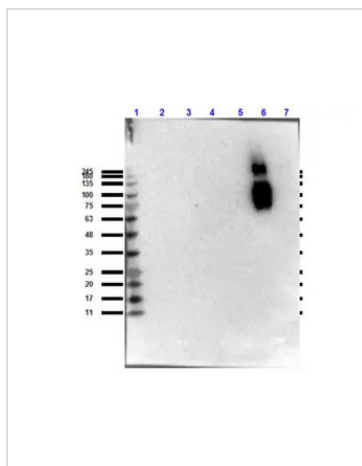
For full product information, images and publications, please visit our [website](#).

Date 2025 / 06 / 17 Page 1 of 2

For laboratory research use only. Not for any clinical, therapeutic, or diagnostic use in humans or animals. Not for animal or human consumption.

**Note**

Purchasers shall not, and agree not to enable third parties to, analyze, copy, reverse engineer or otherwise attempt to determine the structure or sequence of the product.

**DATA IMAGES**

**GTX04268 WB Image**

WB analysis of various sample lysates using GTX04268 Hemoglobin beta S antibody [23E5.H6.G6.C1.H7.F7.G9.F6].

Lane 1 : Prestained molecular weight marker

Lane 2 : HbA

Lane 3 : HbA2

Lane 4 : HbC

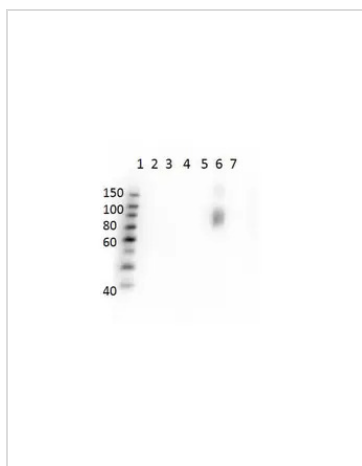
Lane 5 : HbF

Lane 6 : HbS

Lane 7 : BSA

Dilution : 1:1000

Loading : 10µg


**GTX04268 WB Image**

WB analysis of various sample lysates using GTX04268 Hemoglobin beta S antibody [23E5.H6.G6.C1.H7.F7.G9.F6].

Lane 1 : Prestained molecular weight marker

Lane 2 : HbA peptide conjugated to BSA

Lane 3 : HbA-2 peptide conjugated to BSA

Lane 4 : HbC peptide conjugated to BSA

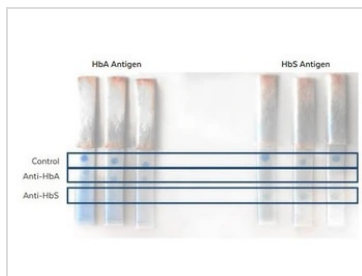
Lane 5 : HbF peptide conjugated to BSA

Lane 6 : HbS peptide conjugated to BSA

Lane 7 : BSA alone

Loading : 50ng per lane

Dilution : 1µg/mL


**GTX04268 Lateral Flow Image**

Lateral flow analysis of recombinant HbA (left group) or HbS (right group) proteins using GTX04267 Hemoglobin beta antibody [14G2.G11.F11] and GTX04268 Hemoglobin beta S antibody [23E5.H6.G6.C1.H7.F7.G9.F6].

Antibody amount : GTX04267 Hemoglobin beta antibody 0.5µL at 250ug/mL and GTX04268 Hemoglobin beta S antibody 0.5µL at 1mg/mL



For full product information, images and publications, please visit our [website](https://www.genetex.com).