

Hemoglobin beta C antibody [15C2.C11.F2.G11]

Cat. No. GTX04269

Host	Mouse
Clonality	Monoclonal
Isotype	IgG1
Applications	WB, ELISA, Lateral Flow
Reactivity	Human

Package
100 µg

Applications

Application Note

*Optimal dilutions/concentrations should be determined by the researcher.

Suggested dilution	Recommended dilution
WB	1 µg/mL
ELISA	1:20000
Lateral Flow	Assay dependent

Not tested in other applications.

Calculated MW 16 kDa. ([Note](#))

Product Note This antibody detect the E6K mutant in the hemoglobin beta subunit and does not react with the HbA, HbS, HbF, or HbA-2 isoforms.

Properties

Form	Liquid
Buffer	20mM Potassium Phosphate, 150mM NaCl
Preservative	0.01% sodium azide
Storage	Store as concentrated solution. Centrifuge briefly prior to opening vial. For short-term storage (1-2 weeks), store at 4°C. For long-term storage, aliquot and store at -20°C or below. Avoid multiple freeze-thaw cycles.
Concentration	1 mg/ml (Please refer to the vial label for the specific concentration.)
Immunogen	Synthetic peptide corresponding to amino acid residues near the N-terminus of Hb beta-subunit conjugated to KLH.
Purification	Protein A purified From tissue culture supernatant
Conjugation	Unconjugated

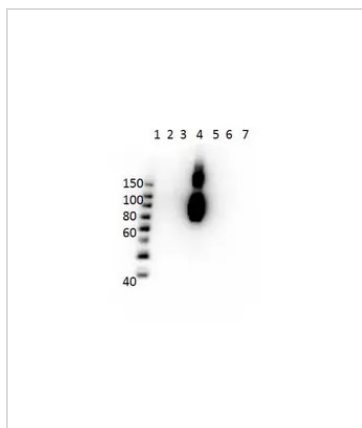


For full product information, images and publications, please visit our [website](#).

For laboratory research use only. Not for any clinical, therapeutic, or diagnostic use in humans or animals. Not for animal or human consumption.

Note

Purchasers shall not, and agree not to enable third parties to, analyze, copy, reverse engineer or otherwise attempt to determine the structure or sequence of the product.

DATA IMAGES

GTx04269 WB Image

WB analysis of various sample lysates using GTx04269 Hemoglobin beta C antibody [15C2.C11.F2.G11].

Lane 1 : Prestained molecular weight marker

Lane 2 : HbA peptide conjugated to BSA

Lane 3 : HbA-2 peptide conjugated to BSA

Lane 4 : HbC peptide conjugated to BSA

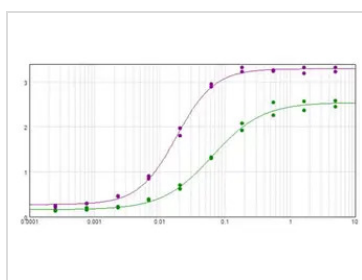
Lane 5 : HbF peptide conjugated to BSA

Lane 6 : HbS peptide conjugated to BSA

Lane 7 : BSA alone

Loading : 50ng per lane

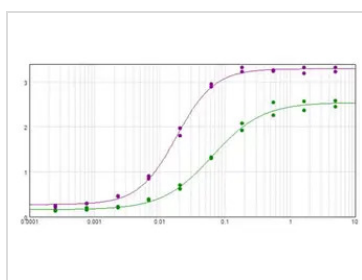
Dilution : 1µg/mL


GTx04269 ELISA Image

ELISA analysis of 0.1µg BSA-conjugated HbC peptide using GTx04269 Hemoglobin beta C antibody [15C2.C11.F2.G11]. The starting dilution of antibody was 5µg/ml and the X-axis represents the Log10 of a 3-fold dilution. This titration is a 4-parameter curve fit where the IC50 is defined as the titer of the antibody.

Purple : GTx04269

Green : Hemoglobin polyclonal antibody


GTx04269 ELISA Image

ELISA analysis of BSA-conjugated HbC peptide using serially diluted GTx04269 Hemoglobin beta C antibody [15C2.C11.F2.G11].

Coating : 0.1 µg per well

Purple : GTx04269

Green : Hemoglobin polyclonal antibody



For full product information, images and publications, please visit our [website](https://www.genetex.com).