

CFP antibody

Cat. No. GTX04275

Host	Rabbit
Clonality	Polyclonal
Isotype	IgG
Applications	WB
Reactivity	Species independent

Package
50 µg

Applications

Application Note

*Optimal dilutions/concentrations should be determined by the researcher.

Suggested dilution	Recommended dilution
WB	0.5-4 µg/mL

Not tested in other applications.

Product Note This antibody has minimum cross-reactivity with Yellow Fluorescent Protein.

Properties

Form	Liquid
Buffer	PBS, 0.5% BSA, 30% Glycerol
Preservative	0.01% Thiomersal
Storage	Store as concentrated solution. Centrifuge briefly prior to opening vial. For short-term storage (1-2 weeks), store at 4°C. For long-term storage, aliquot and store at -20°C or below. Avoid multiple freeze-thaw cycles.
Concentration	0.5 mg/ml (Please refer to the vial label for the specific concentration.)
Immunogen	E. coli expressed recombinant cyan fluorescent protein
Purification	Purified by affinity chromatography From serum
Conjugation	Unconjugated

Note

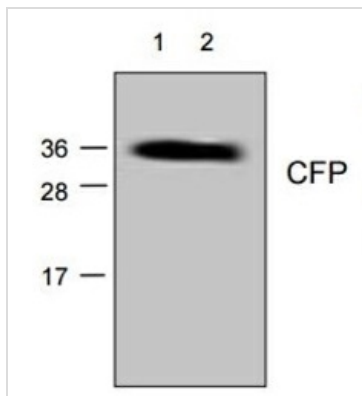
For laboratory research use only. Not for any clinical, therapeutic, or diagnostic use in humans or animals. Not for animal or human consumption.

Purchasers shall not, and agree not to enable third parties to, analyze, copy, reverse engineer or otherwise attempt to determine the structure or sequence of the product.



For full product information, images and publications, please visit our [website](#).

DATA IMAGES



GTX04275 WB Image

WB analysis of recombinant CFP using GTX04275 CFP antibody.

Lane 1 : 100 ng

Lane 2 : 50 ng



For full product information, images and publications, please visit our [website](#).