

alpha Synuclein antibody [2A7]

Cat. No. GTX04298

| | |
|--------------|---------------------------------|
| Host | Mouse |
| Clonality | Monoclonal |
| Isotype | IgG1 |
| Applications | WB, ICC/IF, IHC (Free Floating) |
| Reactivity | Human, Mouse, Rat, Bovine, Pig |

Package
100 µl

Applications

Application Note

*Optimal dilutions/concentrations should be determined by the researcher.

| Suggested dilution | Recommended dilution |
|---------------------|----------------------|
| WB | 1:1000 |
| ICC/IF | 1:1000 |
| IHC (Free Floating) | Assay dependent |

Not tested in other applications.

Calculated MW 14 kDa. ([Note](#))

Properties

| | |
|---------------|--|
| Form | Liquid |
| Buffer | PBS, 50% glycerol |
| Preservative | 5mM sodium azide |
| Storage | Store as concentrated solution. Centrifuge briefly prior to opening vial. For short-term storage (1-2 weeks), store at 4°C. For long-term storage, aliquot and store at -20°C or below. Avoid multiple freeze-thaw cycles. |
| Concentration | 1 mg/ml (Please refer to the vial label for the specific concentration.) |
| Immunogen | Full length human recombinant protein expressed in and purified from E. coli |
| Purification | Purified IgG1 |
| Conjugation | Unconjugated |

Note

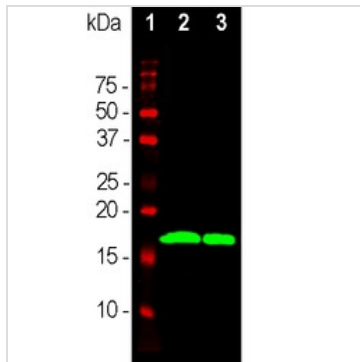
For laboratory research use only. Not for any clinical, therapeutic, or diagnostic use in humans or animals. Not for animal or human consumption.

Purchasers shall not, and agree not to enable third parties to, analyze, copy, reverse engineer or otherwise attempt to determine the structure or sequence of the product.



For full product information, images and publications, please visit our [website](#).

DATA IMAGES



GTX04298 WB Image

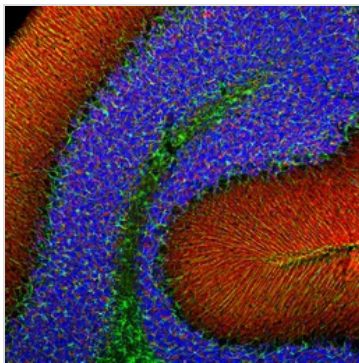
WB analysis of various sample lysates using GTX04298 alpha Synuclein antibody [2A7].

Lane 1 : Molecular marker

Lane 2 : Rat brain tissue lysate

Lane 3 : Rat spinal cord tissue lysate

Dilution : 1:1000



GTX04298 IHC (Free Floating) Image

IHC (Free Floating) analysis of PFA-fixed rat cerebellum tissue using GTX04298 alpha Synuclein antibody [2A7].

Red : Primary antibody

Green : GFAP

Blue : Hoechst

Dilution : 1:1000



For full product information, images and publications, please visit our [website](https://www.genetex.com).