

# Mouse anti-Human IgM antibody [SA-DA4] (FITC)

**Cat. No. GTX04300-06**

<b>Host</b>	Mouse
<b>Clonality</b>	Monoclonal
<b>Isotype</b>	IgG1
<b>Applications</b>	WB, ICC/IF, IHC-Fr, FCM, IP, ELISA, Multiplexing
<b>Reactivity</b>	Human

References ( 1 )

Package

500 µg

## Applications

### Application Note

\*Optimal dilutions/concentrations should be determined by the researcher.

Suggested dilution	Recommended dilution
WB	Assay dependent
ICC/IF	Assay dependent
IHC-Fr	Assay dependent
FCM	≤ 1 µg/106cells in a final volume of 100 µL
IP	Assay dependent
ELISA	1:200-1:400
Multiplexing	Assay dependent

Not tested in other applications.

## Properties

<b>Form</b>	Liquid
<b>Buffer</b>	PBS
<b>Preservative</b>	0.09 % sodium azide
<b>Storage</b>	Store as concentrated solution. Centrifuge briefly prior to opening vial. Store at 4°C. Protect from light.
<b>Concentration</b>	0.5 mg/ml (Please refer to the vial label for the specific concentration.)
<b>Immunogen</b>	Human IgM myeloma protein
<b>Purification</b>	Purified IgG1
<b>Conjugation</b>	Fluorescein isothiocyanate (FITC) <a href="#">Wavelength</a>

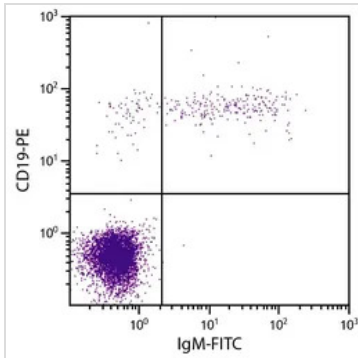


For full product information, images and publications, please visit our [website](#).

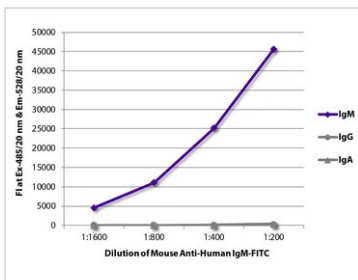
For laboratory research use only. Not for any clinical, therapeutic, or diagnostic use in humans or animals. Not for animal or human consumption.

**Note**

Purchasers shall not, and agree not to enable third parties to, analyze, copy, reverse engineer or otherwise attempt to determine the structure or sequence of the product.

**DATA IMAGES**

**GTx04300-06 FCM Image**

FACS analysis of human peripheral blood lymphocytes using GTx04300-06 Mouse anti-Human IgM antibody [SA-DA4] (FITC) and Mouse anti-Human CD19 antibody (PE).


**GTx04300-06 ELISA Image**

ELISA analysis of human IgM, IgG, IgA using serially diluted GTx04300-06 Mouse anti-Human IgM antibody [SA-DA4] (FITC).



For full product information, images and publications, please visit our [website](http://www.genetex.com).