

## OMP antibody

**Cat. No. GTX04312**

<b>Host</b>	Rabbit
<b>Clonality</b>	Polyclonal
<b>Isotype</b>	IgG
<b>Applications</b>	WB, ICC/IF, FCM, ELISA
<b>Reactivity</b>	Human, Mouse, Rat

**Package**  
100 µg

## Applications

**Application Note**

\*Optimal dilutions/concentrations should be determined by the researcher.

Suggested dilution	Recommended dilution
WB	0.25-0.5 µg/ml
ICC/IF	5 µg/ml
FCM	1-3 µg/1x10 <sup>6</sup> cells
ELISA	0.1-0.5 µg/mL

Not tested in other applications.

## Properties

<b>Form</b>	Liquid
<b>Buffer</b>	4mg Trehalose, 0.9mg NaCl, 0.2mg Na <sub>2</sub> HPO <sub>4</sub>
<b>Preservative</b>	No preservatives
<b>Storage</b>	Store as concentrated solution. Centrifuge briefly prior to opening vial. For short-term storage (1-2 weeks), store at 4°C. For long-term storage, aliquot and store at -20°C or below. Avoid multiple freeze-thaw cycles.
<b>Concentration</b>	0.5 mg/ml (Please refer to the vial label for the specific concentration.)
<b>Immunogen</b>	E.coli-derived human OMP recombinant protein (Position: E43-L163).
<b>Purification</b>	Purified by antigen-affinity chromatography
<b>Conjugation</b>	Unconjugated

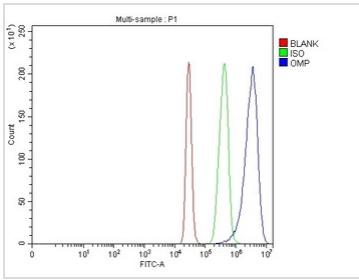
**Note** For laboratory research use only. Not for any clinical, therapeutic, or diagnostic use in humans or animals. Not for animal or human consumption.

Purchasers shall not, and agree not to enable third parties to, analyze, copy, reverse engineer or otherwise attempt to determine the structure or sequence of the product.



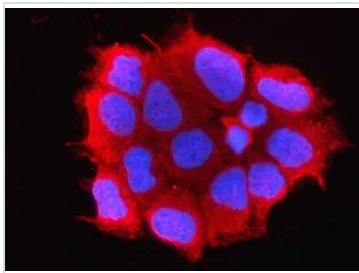
For full product information, images and publications, please visit our [website](#).

DATA IMAGES



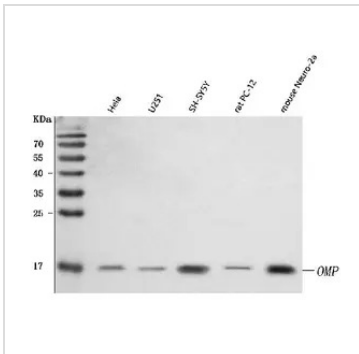
**GTX04312 FCM Image**

FACS analysis of 293T cells using GTX04312 OMP antibody.  
 Blue : Primary antibody  
 Green : Isotype control antibody  
 Red : Unlabelled sample  
 Antibody amount : 1 µg/1x10<sup>6</sup> cells



**GTX04312 ICC/IF Image**

ICC/IF analysis of Caco-2 cells using GTX04312 OMP antibody.  
 Red : Primary antibody  
 Blue : DAPI  
 Antigen retrieval : IHC enzyme antigen retrieval reagent for 15 mins  
 Dilution : 5 µg/mL



**GTX04312 WB Image**

WB analysis of various cell lysates using GTX04312 OMP antibody.  
 Lane 1 : HeLa whole cell lysates  
 Lane 2 : U251 whole cell lysates  
 Lane 3 : SH-SY5Y whole cell lysates  
 Lane 4 : PC-12 whole cell lysates  
 Lane 5 : Neuro 2a whole cell lysates  
 Dilution : 0.5 µg/mL  
 Loading : 30 µg



For full product information, images and publications, please visit our [website](#).