

## beta 1 Adrenergic Receptor antibody

Cat. No. GTX04321

Host	Rabbit
Clonality	Polyclonal
Isotype	IgG
Applications	WB, IHC-P, FCM
Reactivity	Human, Mouse, Rat

Package  
100 µl

## Applications

## Application Note

\*Optimal dilutions/concentrations should be determined by the researcher.

Suggested dilution	Recommended dilution
WB	1:300-1:5000
IHC-P	1:200-1:400
FCM	1:20-1:100

Not tested in other applications.

Calculated MW 51 kDa. ( [Note](#) )

## Properties

Form	Liquid
Buffer	10mM TBS, 1% BSA, 50% Glycerol
Preservative	0.03% Proclin 300
Storage	Store as concentrated solution. Centrifuge briefly prior to opening vial. For short-term storage (1-2 weeks), store at 4°C. For long-term storage, aliquot and store at -20°C or below. Avoid multiple freeze-thaw cycles.
Concentration	1 mg/ml (Please refer to the vial label for the specific concentration.)
Immunogen	KLH conjugated synthetic peptide derived from human ADRB1 (181-250aa).
Purification	Protein A purified
Conjugation	Unconjugated

## Note

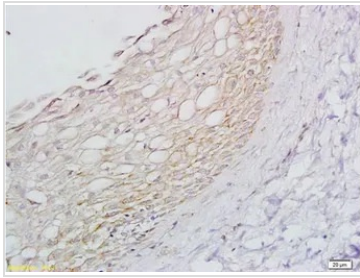
For laboratory research use only. Not for any clinical, therapeutic, or diagnostic use in humans or animals. Not for animal or human consumption.

Purchasers shall not, and agree not to enable third parties to, analyze, copy, reverse engineer or otherwise attempt to determine the structure or sequence of the product.



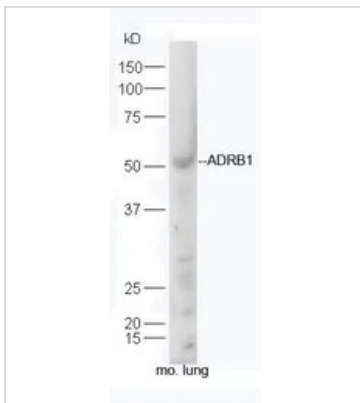
For full product information, images and publications, please visit our [website](#).

## DATA IMAGES



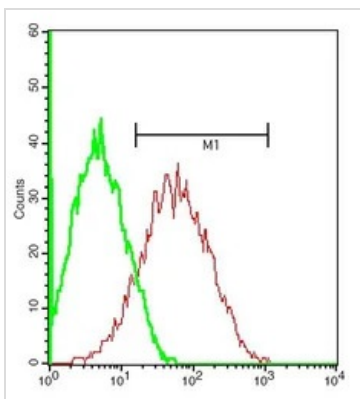
### GTX04321 IHC-P Image

IHC-P analysis of skin of rat foot tissue using GTX04321 beta 1 Adrenergic Receptor antibody.  
Dilution : 1:200



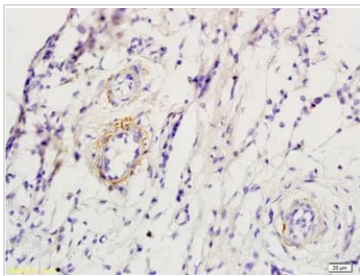
### GTX04321 WB Image

WB analysis of mouse lung tissue lysate using GTX04321 beta 1 Adrenergic Receptor antibody.  
Dilution : 1:300



### GTX04321 FCM Image

FACS analysis of mouse kidney cells using GTX04321 beta 1 Adrenergic Receptor antibody.  
Red : Primary antibody  
Green : Isotype Control  
Dilution : 1:200



### GTX04321 IHC-P Image

IHC-P analysis of skin of rat foot tissue using GTX04321 beta 1 Adrenergic Receptor antibody.  
Dilution : 1:200



For full product information, images and publications, please visit our [website](https://www.genetex.com).