

Coagulation factor III/Tissue Factor antibody

Cat. No. GTX04323

Host	Rabbit
Clonality	Polyclonal
Isotype	IgG
Applications	WB, ICC/IF
Reactivity	Human

Package
100 µl

Applications

Application Note

*Optimal dilutions/concentrations should be determined by the researcher.

Suggested dilution	Recommended dilution
WB	1:500-1:2000
ICC/IF	1:100-1:500

Not tested in other applications.

Calculated MW 33 kDa. ([Note](#))

Properties

Form	Liquid
Buffer	PBS, 150mM NaCl, 50% Glycerol
Preservative	0.02% sodium azide
Storage	Store as concentrated solution. Centrifuge briefly prior to opening vial. For short-term storage (1-2 weeks), store at 4°C. For long-term storage, aliquot and store at -20°C or below. Avoid multiple freeze-thaw cycles.
Concentration	1 mg/ml (Please refer to the vial label for the specific concentration.)
Immunogen	A synthesized peptide derived from human F3(Accession P13726), corresponding to amino acid residues I269-S295.
Purification	Purified by antigen-affinity chromatography From serum
Conjugation	Unconjugated

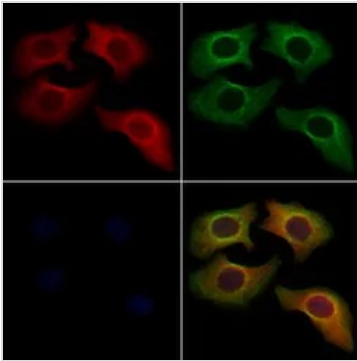
Note

For laboratory research use only. Not for any clinical, therapeutic, or diagnostic use in humans or animals. Not for animal or human consumption.

Purchasers shall not, and agree not to enable third parties to, analyze, copy, reverse engineer or otherwise attempt to determine the structure or sequence of the product.



For full product information, images and publications, please visit our [website](#).

DATA IMAGES

GTx04323 ICC/IF Image

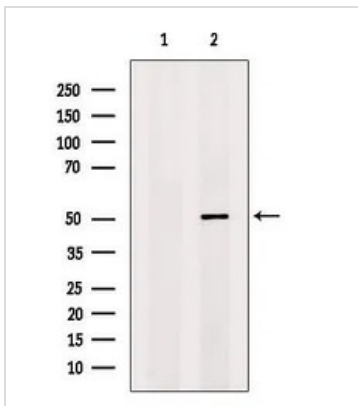
ICC/IF analysis of PFA fixed HeLa cells using GTx04323 Coagulation factor III/Tissue Factor antibody.

Red : Primary antibody

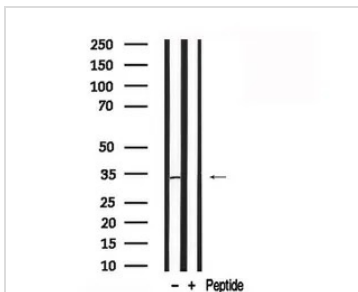
Green : beta tubulin

Permeabilization : 0.1% Triton X-100

Dilution : 1:200


GTx04323 WB Image

WB analysis of MDA-MB-231 whole cell lysate using GTx04323 Coagulation factor III/Tissue Factor antibody. The lane on the left was treated with blocking peptide.


GTx04323 WB Image

WB analysis of MDA-MB-231 whole cell lysate using GTx04323 Coagulation factor III/Tissue Factor antibody. The lane on the left was treated with blocking peptide.



For full product information, images and publications, please visit our [website](https://www.genetex.com).