

## Coagulation factor III/Tissue Factor antibody

Cat. No. GTX04324

Host	Rabbit
Clonality	Polyclonal
Isotype	IgG
Applications	WB, ICC/IF, IHC-P, IHC-Fr, FCM
Reactivity	Mouse, Rat, Pig

Package  
100 µl

## Applications

## Application Note

\*Optimal dilutions/concentrations should be determined by the researcher.

Suggested dilution	Recommended dilution
WB	1:300-1:5000
ICC/IF	1:50-1:200
IHC-P	1:200-1:400
IHC-Fr	1:50-1:200
FCM	1:20-1:100

Not tested in other applications.

Calculated MW 33 kDa. ( [Note](#) )

## Properties

Form	Liquid
Buffer	10mM TBS, 1% BSA, 50% Glycerol
Preservative	0.03% Proclin 300
Storage	Store as concentrated solution. Centrifuge briefly prior to opening vial. For short-term storage (1-2 weeks), store at 4°C. For long-term storage, aliquot and store at -20°C or below. Avoid multiple freeze-thaw cycles.
Concentration	1 mg/ml (Please refer to the vial label for the specific concentration.)
Immunogen	KLH conjugated synthetic peptide derived from human CD142 (32-100aa).
Purification	Protein A purified
Conjugation	Unconjugated

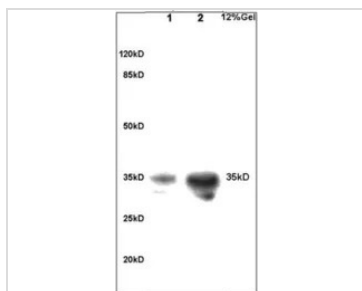
For full product information, images and publications, please visit our [website](#).

For laboratory research use only. Not for any clinical, therapeutic, or diagnostic use in humans or animals. Not for animal or human consumption.

## Note

Purchasers shall not, and agree not to enable third parties to, analyze, copy, reverse engineer or otherwise attempt to determine the structure or sequence of the product.

## DATA IMAGES



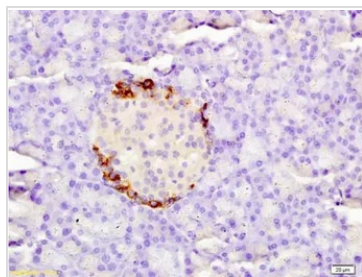
### GTx04324 WB Image

WB analysis of various sample lysates using GTx04324 Coagulation factor III/Tissue Factor antibody.

Lane 1: rat brain

Lane 2: rat liver

Dilution : 1:200



### GTx04324 IHC-P Image

IHC-P analysis of rat pancreas tissue using GTx04324 Coagulation factor III/Tissue Factor antibody.

Dilution : 1:200



For full product information, images and publications, please visit our [website](https://www.genetex.com).