

SGLT1 antibody

Cat. No. GTX04333

Host	Rabbit
Clonality	Polyclonal
Isotype	IgG
Applications	WB
Reactivity	Human, Mouse, Rat

Package
100 µg

Applications

Application Note

*Optimal dilutions/concentrations should be determined by the researcher.

Suggested dilution	Recommended dilution
WB	0.1-0.5 µg/ml
Not tested in other applications.	

Calculated MW 73 kDa. ([Note](#))

Properties

Form	Liquid
Buffer	5mg BSA, 0.9mg NaCl, 0.2mg Na ₂ HPO ₄
Preservative	0.05mg sodium azide, 0.05mg Thimerosal
Storage	Store as concentrated solution. Centrifuge briefly prior to opening vial. For short-term storage (1-2 weeks), store at 4°C. For long-term storage, aliquot and store at -20°C or below. Avoid multiple freeze-thaw cycles.
Concentration	0.5 mg/ml (Please refer to the vial label for the specific concentration.)
Immunogen	A synthetic peptide corresponding to a sequence at the C-terminus of mouse SGLT1 (620-635aa KMTKEEEEAMKMKMTD), different from the related rat sequence by one amino acid, and from the related human sequence by two amino acids.
Purification	Purified by antigen-affinity chromatography
Conjugation	Unconjugated

Note

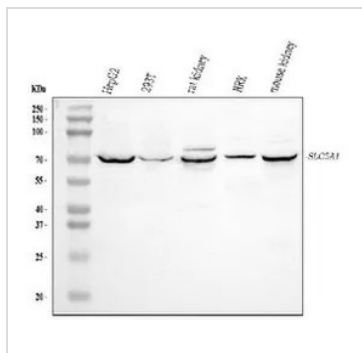
For laboratory research use only. Not for any clinical, therapeutic, or diagnostic use in humans or animals. Not for animal or human consumption.

Purchasers shall not, and agree not to enable third parties to, analyze, copy, reverse engineer or otherwise attempt to determine the structure or sequence of the product.



For full product information, images and publications, please visit our [website](#).

DATA IMAGES



GTX04333 WB Image

WB analysis of various cell lysates using GTX04333 SGLT1 antibody.

Lane 1 : HepG2 whole cell lysate

Lane 2 : 293T whole cell lysate

Lane 3 : rat kidney tissue lysate

Lane 4 : NRK whole cell lysates

Lane 5 : mouse kidney tissue lysate

Dilution : 0.5 µg/mL

Loading : 30µg



For full product information, images and publications, please visit our [website](https://www.genetex.com).