

## pan-Mono-MethylR (R\*GG) Motif antibody

**Cat. No. GTX04340**

<b>Host</b>	Rabbit
<b>Clonality</b>	Polyclonal
<b>Isotype</b>	IgG
<b>Applications</b>	WB, Dot
<b>Reactivity</b>	Human, Mouse, Rat

**Package**  
100 µl

## Applications

**Application Note**

\*Optimal dilutions/concentrations should be determined by the researcher.

Suggested dilution	Recommended dilution
WB	1:500 - 1:2000
Dot	Assay dependent

Not tested in other applications.

## Properties

<b>Form</b>	Liquid
<b>Buffer</b>	PBS, 50% Glycerol (may contain BSA, please contact us for BSA-free format)
<b>Preservative</b>	0.01% Thiomersal
<b>Storage</b>	Store as concentrated solution. Centrifuge briefly prior to opening vial. For short-term storage (1-2 weeks), store at 4°C. For long-term storage, aliquot and store at -20°C or below. Avoid multiple freeze-thaw cycles.
<b>Concentration</b>	Batch dependent (Please refer to the vial label for the specific concentration.)
<b>Immunogen</b>	A synthetic peptide corresponding to a sequence containing monomethylated R.
<b>Purification</b>	Purified by affinity chromatography
<b>Conjugation</b>	Unconjugated

**Note**

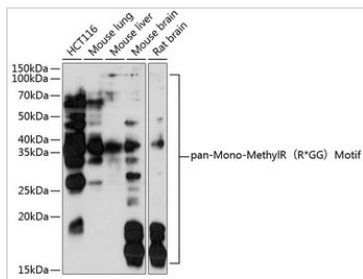
For laboratory research use only. Not for any clinical, therapeutic, or diagnostic use in humans or animals. Not for animal or human consumption.

Purchasers shall not, and agree not to enable third parties to, analyze, copy, reverse engineer or otherwise attempt to determine the structure or sequence of the product.



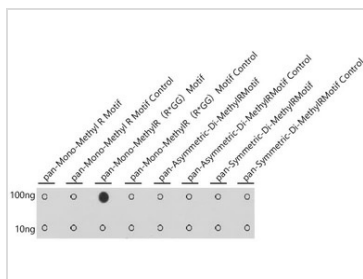
For full product information, images and publications, please visit our [website](#).

DATA IMAGES



**GTX04340 WB Image**

WB analysis of various sample lysates using GTX04340 pan-Mono-MethylR (R\*GG) Motif antibody.



**GTX04340 Dot Image**

Dot blot analysis of various samples using GTX04340 pan-Mono-MethylR (R\*GG) Motif antibody.



For full product information, images and publications, please visit our [website](#).