

DHCR7 antibody

Cat. No. GTX04343

Host	Rabbit
Clonality	Polyclonal
Isotype	IgG
Applications	WB, ICC/IF, IHC-P
Reactivity	Human, Mouse

Package
400 µl

Applications

Application Note

*Optimal dilutions/concentrations should be determined by the researcher.

Suggested dilution	Recommended dilution
WB	1:2000
ICC/IF	1:10-1:50
IHC-P	1:50-1:100

Not tested in other applications.

Calculated MW 54 kDa. ([Note](#))

Properties

Form	Liquid
Buffer	PBS
Preservative	0.09% (W/V) sodium azide
Storage	Store as concentrated solution. Centrifuge briefly prior to opening vial. For short-term storage (1-2 weeks), store at 4°C. For long-term storage, aliquot and store at -20°C or below. Avoid multiple freeze-thaw cycles.
Concentration	Batch dependent (Please refer to the vial label for the specific concentration.)
Immunogen	KLH conjugated synthetic peptide between 437-463 amino acids from the C-terminal region of human DHCR7.
Purification	Protein A purified followed by peptide affinity purification
Conjugation	Unconjugated

Note

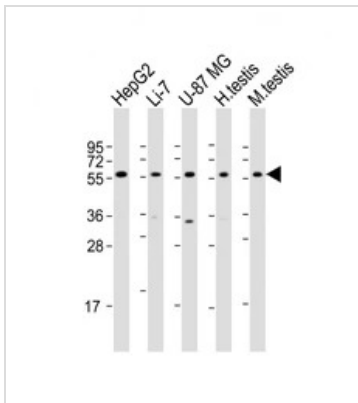
For laboratory research use only. Not for any clinical, therapeutic, or diagnostic use in humans or animals. Not for animal or human consumption.

Purchasers shall not, and agree not to enable third parties to, analyze, copy, reverse engineer or otherwise attempt to determine the structure or sequence of the product.



For full product information, images and publications, please visit our [website](#).

DATA IMAGES

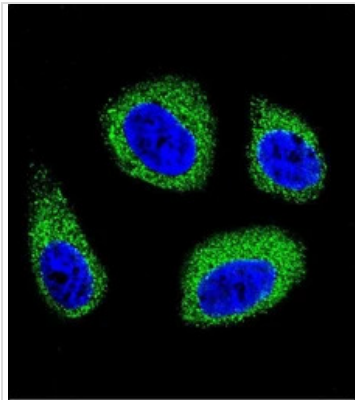


GTX04343 WB Image

WB analysis of various sample lysates using GTX04343 DHCR7 antibody.

Dilution : 1:2000

Loading : 20 µg

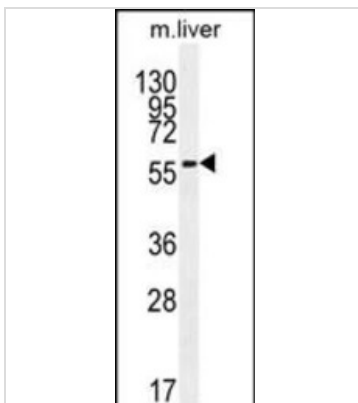


GTX04343 ICC/IF Image

ICC/IF analysis of MCF7 cells using GTX04343 DHCR7 antibody.

Green : Primary antibody

Blue : DAPI



GTX04343 WB Image

WB analysis of mouse liver tissue lysate using GTX04343 DHCR7 antibody.

Dilution : 1:2000

Loading : 35 µg



For full product information, images and publications, please visit our [website](https://www.genetex.com).