

PAX7 antibody

Cat. No. GTX04357

Host	Rabbit
Clonality	Polyclonal
Isotype	IgG
Applications	WB, IHC-P
Reactivity	Human, Mouse

Package
400 µl

Applications

Application Note

*Optimal dilutions/concentrations should be determined by the researcher.

Suggested dilution	Recommended dilution
WB	1:2000
IHC-P	1:50-1:200

Not tested in other applications.

Calculated MW 55 kDa. ([Note](#))

Properties

Form	Liquid
Buffer	PBS
Preservative	0.09% Sodium azide
Storage	Store as concentrated solution. Centrifuge briefly prior to opening vial. For short-term storage (1-2 weeks), store at 4°C. For long-term storage, aliquot and store at -20°C or below. Avoid multiple freeze-thaw cycles.
Concentration	Batch dependent (Please refer to the vial label for the specific concentration.)
Immunogen	KLH conjugated synthetic peptide between 410-437 amino acids from the C-terminal region of human PAX7.
Purification	Protein A purified followed by peptide affinity purification
Conjugation	Unconjugated

Note

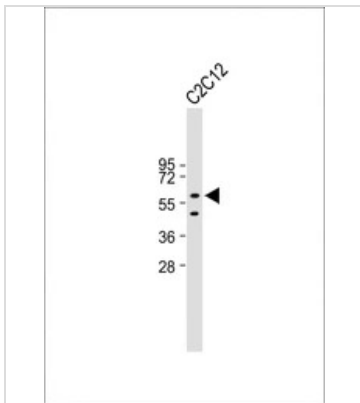
For laboratory research use only. Not for any clinical, therapeutic, or diagnostic use in humans or animals. Not for animal or human consumption.

Purchasers shall not, and agree not to enable third parties to, analyze, copy, reverse engineer or otherwise attempt to determine the structure or sequence of the product.



For full product information, images and publications, please visit our [website](#).

DATA IMAGES

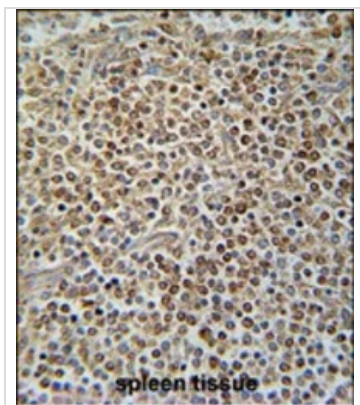


GTx04357 WB Image

WB analysis of C2C12 whole cell lysate using GTx04357 PAX7 antibody.

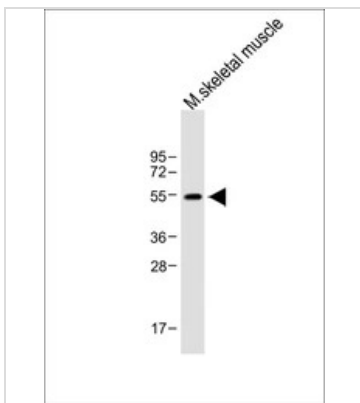
Dilution : 1:2000

Loading : 20 µg



GTx04357 IHC-P Image

IHC-P analysis of human spleen tissue using GTx04357 PAX7 antibody.



GTx04357 WB Image

WB analysis of mouse skeletal muscle tissue using GTx04357 PAX7 antibody.

Dilution : 1:1000

Loading : 20 µg



For full product information, images and publications, please visit our [website](https://www.genetex.com).