

PAX7 antibody

Cat. No. GTX04358

Host	Rabbit
Clonality	Polyclonal
Isotype	IgG
Applications	WB, ICC/IF
Reactivity	Human, Mouse

Package
100 µl

Applications

Application Note

*Optimal dilutions/concentrations should be determined by the researcher.

Suggested dilution	Recommended dilution
WB	1:500-1:2000
ICC/IF	1:100-1:500

Not tested in other applications.

Calculated MW 55 kDa. ([Note](#))

Properties

Form	Liquid
Buffer	PBS, 150mM NaCl, 50% Glycerol
Preservative	0.02% Sodium azide
Storage	Store as concentrated solution. Centrifuge briefly prior to opening vial. For short-term storage (1-2 weeks), store at 4°C. For long-term storage, aliquot and store at -20°C or below. Avoid multiple freeze-thaw cycles.
Concentration	1 mg/ml (Please refer to the vial label for the specific concentration.)
Immunogen	A synthesized peptide derived from human PAX7(Accession P23759), corresponding to amino acid residues D178-Q228.
Purification	Purified by antigen-affinity chromatography From serum
Conjugation	Unconjugated

Note

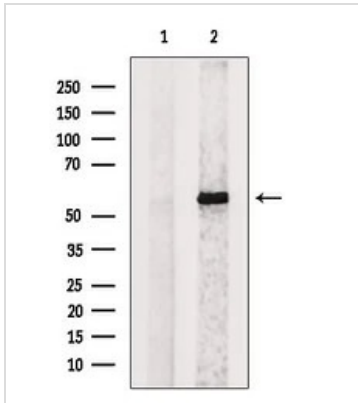
For laboratory research use only. Not for any clinical, therapeutic, or diagnostic use in humans or animals. Not for animal or human consumption.

Purchasers shall not, and agree not to enable third parties to, analyze, copy, reverse engineer or otherwise attempt to determine the structure or sequence of the product.



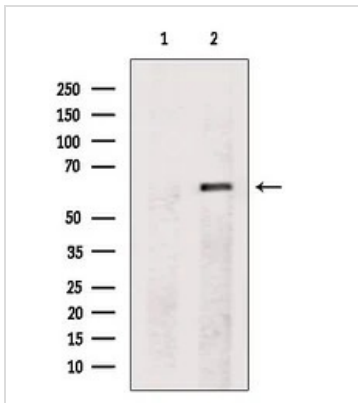
For full product information, images and publications, please visit our [website](#).

DATA IMAGES



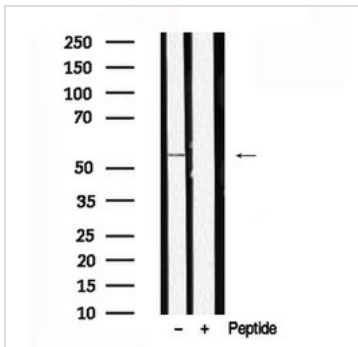
GTx04358 WB Image

WB analysis of mouse brain tissue lysate using GTx04358 PAX7 antibody. The lane on the left was treated with blocking peptide.



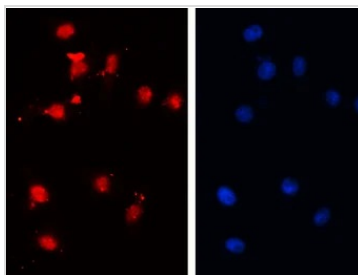
GTx04358 WB Image

WB analysis of mouse brain tissue lysate using GTx04358 PAX7 antibody. The lane on the left was treated with blocking peptide.



GTx04358 WB Image

WB analysis of HeLa whole cell lysate using GTx04358 PAX7 antibody. The lane on the right was treated with blocking peptide.



GTx04358 ICC/IF Image

ICC/IF analysis of HeLa cells using GTx04358 PAX7 antibody.

Red : Primary antibody

Blue : Nucleus

Dilution : 1:100



For full product information, images and publications, please visit our [website](https://www.genetex.com).