

Ki67 antibody [MSVA-267M] HistoMAX™

Cat. No. GTX04361

Host	Mouse
Clonality	Monoclonal
Isotype	IgG2b
Applications	IHC-P
Reactivity	Human

Package

500 µl, 100 µl

PRODUCT

This antibody was validated on 76 different Normal Tissues by IHC-P.

Summary

[Go to Normal Tissue Gallery](#)

[Go to Cancer Tissue Gallery](#)

Applications

Application Note

*Optimal dilutions/concentrations should be determined by the researcher.

Suggested dilution	Recommended dilution
IHC-P	1:100-1:200
<p>Note : Manual staining : Heat-induced antigen retrieval for 5 minutes in an autoclave at 121°C in pH 7.8 Tris-EDTA-based Target Retrieval Solution buffer. Based on testing result, pH 9.0 showed a strongest staining pattern. However, pH 7.8 results in only a slight reduction of the staining intensity as compared to pH 9.0. Therefore, the pH 7.8 was an optimal for manual staining because of the better tissue preservation at pH 7.8 than at pH 9.0.</p> <p>This antibody has been validated by Autostainer including Agilent/Dako - Autostainer Link 48, Bond RX-Lecia, and Roche-Ventana Discovery ULTRA. The detailed steps by Autostainer please refer to the protocol.</p>	

Not tested in other applications.

Product Note

Highly recommended for IHC-P in human tissues.

Properties

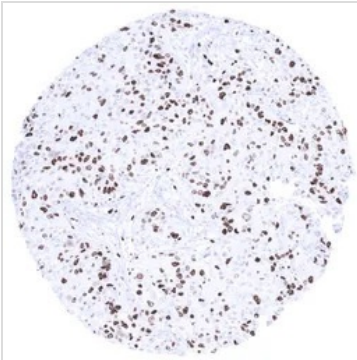
Form	Liquid
Buffer	PBS, 0.05% BSA (Please contact us for PBS only format)
Preservative	0.05% sodium azide
Storage	Store as concentrated solution. Centrifuge briefly prior to opening vial. For short-term storage (1-2 weeks), store at 4°C. For long-term storage, aliquot and store at -20°C or below. Avoid multiple freeze-thaw cycles.
Concentration	0.2 mg/ml (Please refer to the vial label for the specific concentration.)
Immunogen	Recombinant human Ki67 protein fragment (around aa 2293-2478)



For full product information, images and publications, please visit our [website](#).

Date 2026 / 02 / 02 Page 1 of 2

Purification	Protein A/G purified
Conjugation	Unconjugated
Note	<p>For laboratory research use only. Not for any clinical, therapeutic, or diagnostic use in humans or animals. Not for animal or human consumption.</p> <p>Purchasers shall not, and agree not to enable third parties to, analyze, copy, reverse engineer or otherwise attempt to determine the structure or sequence of the product.</p>

DATA IMAGES

GTX04361 IHC-P Image

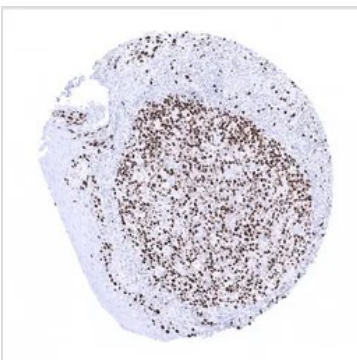
IHC-P analysis of human invasive breast cancer of no special type (NST) tissue using GTX04361 Ki67 antibody [MSVA-267M] HistoMAX™.

High Ki67 LI in a breast cancer of no special type (NST).


GTX04361 IHC-P Image

IHC-P analysis of human liver tissue using GTX04361 Ki67 antibody [MSVA-267M] HistoMAX™.

The liver represents an ideal normal tissue control for Ki67 staining quality. Less than 1 of the hepatocytes should stain and cytoplasmic staining should be absent.


GTX04361 IHC-P Image

IHC-P analysis of human tonsil tissue using GTX04361 Ki67 antibody [MSVA-267M] HistoMAX™.

Ki67 stained cells are preferential seen in germinal centre and in supra basal cells of the surface epithelium.



For full product information, images and publications, please visit our [website](https://www.genetex.com).