

pan Cytokeratin antibody [MSVA-000R] HistoMAX™

Cat. No. GTX04363

Host	Rabbit
Clonality	Monoclonal
Isotype	IgG
Applications	IHC-P
Reactivity	Human

References (2)

Package

500 µl, 100 µl

PRODUCT

This antibody was validated on 76 different Normal Tissues by IHC-P.

Summary

[Go to Normal Tissue Gallery](#)[Go to Cancer Tissue Gallery](#)

Applications

Application Note

*Optimal dilutions/concentrations should be determined by the researcher.

Suggested dilution	Recommended dilution
--------------------	----------------------

IHC-P	1:100-1:200
-------	-------------

Note : Manual staining : Heat-induced antigen retrieval for 5 minutes in an autoclave at 121°C in pH 7.8 Tris-EDTA-based Target Retrieval Solution buffer. Based on the testing result, the pH 9.0 showed a strongest staining pattern. The pH 7.8 is acceptable but lower pH results in a significant reduction of sensitivity.

This antibody has been validated by Autostainer including Agilent/Dako - Autostainer Link 48, Bond RX-Lecia, and Roche-Ventana Discovery ULTRA. The detailed steps by Autostainer please refer to the [protocol](#).

Not tested in other applications.

Product Note	Highly recommended for IHC-P in human tissues.
--------------	--

Properties

Form	Liquid
Buffer	PBS, 0.05% BSA (Please contact us for PBS only format)
Preservative	0.05% sodium azide
Storage	Store as concentrated solution. Centrifuge briefly prior to opening vial. For short-term storage (1-2 weeks), store at 4°C. For long-term storage, aliquot and store at -20°C or below. Avoid multiple freeze-thaw cycles.
Concentration	0.2 mg/ml (Please refer to the vial label for the specific concentration.)
Immunogen	Human epidermal keratin



For full product information, images and publications, please visit our [website](#).

Date 2026 / 02 / 02 Page 1 of 2

Purification	Protein A/G purified
Conjugation	Unconjugated
Note	<p>For laboratory research use only. Not for any clinical, therapeutic, or diagnostic use in humans or animals. Not for animal or human consumption.</p> <p>Purchasers shall not, and agree not to enable third parties to, analyze, copy, reverse engineer or otherwise attempt to determine the structure or sequence of the product.</p>

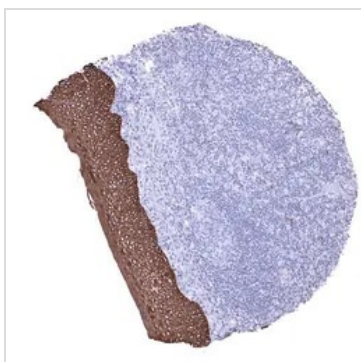
DATA IMAGES

GTx04363 IHC-P Image

IHC-P analysis of human liver tissue using GTx04363 pan Cytokeratin antibody [MSVA-000R] HistoMAX™. In the liver, a strong cytoplasmic staining of all bile ductal epithelial cells and an at least moderate predominantly membranous immunostaining of hepatocytes is seen.


GTx04363 IHC-P Image

IHC-P analysis of human invasive lobular breast cancer (ILC) tissue using GTx04363 pan Cytokeratin antibody [MSVA-000R] HistoMAX™. Invasive lobular breast cancer showing strong diffuse pan Cytokeratin positivity in tumor cells.


GTx04363 IHC-P Image

IHC-P analysis of human tonsil tissue using GTx04363 pan Cytokeratin antibody [MSVA-000R] HistoMAX™.



For full product information, images and publications, please visit our [website](https://www.genetex.com).