

pan Cytokeratin antibody [MSVA-000R] HistoMAX™

Cat. No. GTX04363

Host	Rabbit
Clonality	Monoclonal
Isotype	IgG
Applications	IHC-P
Reactivity	Human

Package

500 µl, 100 µl

PRODUCT

This antibody was validated on 76 different Normal Tissues by IHC-P.

Summary

[Go to Normal Tissue Gallery](#)

[Go to Cancer Tissue Gallery](#)

Applications

Application Note

*Optimal dilutions/concentrations should be determined by the researcher.

Suggested dilution	Recommended dilution
IHC-P	1:100-1:200
<p>Note : Manual staining : Heat-induced antigen retrieval for 5 minutes in an autoclave at 121°C in pH 7.8 Tris-EDTA-based Target Retrieval Solution buffer. Based on the testing result, the pH 9.0 showed a strongest staining pattern. The pH 7.8 is acceptable but lower pH results in a significant reduction of sensitivity.</p> <p>This antibody has been validated by Autostainer including Agilent/Dako - Autostainer Link 48, Bond RX-Lecia, and Roche-Ventana Discovery ULTRA. The detailed steps by Autostainer please refer to the protocol.</p>	

Not tested in other applications.

Product Note

Highly recommended for IHC-P in human tissues.

Properties

Form	Liquid
Buffer	PBS, 0.05% BSA (Please contact us for PBS only format)
Preservative	0.05% sodium azide
Storage	Store as concentrated solution. Centrifuge briefly prior to opening vial. For short-term storage (1-2 weeks), store at 4°C. For long-term storage, aliquot and store at -20°C or below. Avoid multiple freeze-thaw cycles.
Concentration	0.2 mg/ml (Please refer to the vial label for the specific concentration.)
Immunogen	Human epidermal keratin



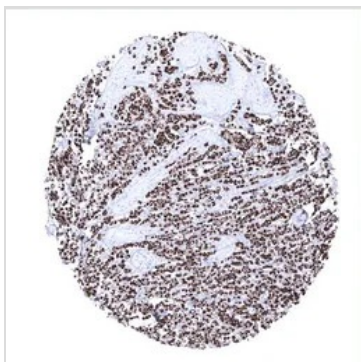
For full product information, images and publications, please visit our [website](#).

Purification	Protein A/G purified
Conjugation	Unconjugated
Note	For laboratory research use only. Not for any clinical, therapeutic, or diagnostic use in humans or animals. Not for animal or human consumption. Purchasers shall not, and agree not to enable third parties to, analyze, copy, reverse engineer or otherwise attempt to determine the structure or sequence of the product.

DATA IMAGES

GTx04363 IHC-P Image

IHC-P analysis of human liver tissue using GTx04363 pan Cytokeratin antibody [MSVA-000R] HistoMAX™. In the liver, a strong cytoplasmic staining of all bile ductal epithelial cells and an at least moderate predominantly membranous immunostaining of hepatocytes is seen.


GTx04363 IHC-P Image

IHC-P analysis of human invasive lobular breast cancer (ILC) tissue using GTx04363 pan Cytokeratin antibody [MSVA-000R] HistoMAX™. Invasive lobular breast cancer showing strong diffuse pan Cytokeratin positivity in tumor cells.


GTx04363 IHC-P Image

IHC-P analysis of human tonsil tissue using GTx04363 pan Cytokeratin antibody [MSVA-000R] HistoMAX™.



For full product information, images and publications, please visit our [website](https://www.genetex.com).