

## E-Cadherin antibody [MSVA-035R] HistoMAX™

Cat. No. GTX04367

Host	Rabbit
Clonality	Monoclonal
Isotype	IgG
Applications	IHC-P
Reactivity	Human

## Package

500 µl, 100 µl

## PRODUCT

This antibody was validated on 76 different Normal Tissues by IHC-P.

## Summary

[Go to Normal Tissue Gallery](#)[Go to Cancer Tissue Gallery](#)

## Applications

## Application Note

\*Optimal dilutions/concentrations should be determined by the researcher.

Suggested dilution	Recommended dilution
--------------------	----------------------

IHC-P	1:100-1:200
-------	-------------

**Note : Manual staining : Heat-induced antigen retrieval for 5 minutes in an autoclave at 121°C in pH 7.8 Tris-EDTA-based Target Retrieval Solution buffer.**

Not tested in other applications.

## Product Note

**Highly recommended for IHC-P in human tissues.**

## Properties

Form	Liquid
Buffer	PBS, 0.05% BSA (Please contact us for PBS only format)
Preservative	0.05% sodium azide
Storage	Store as concentrated solution. Centrifuge briefly prior to opening vial. For short-term storage (1-2 weeks), store at 4°C. For long-term storage, aliquot and store at -20°C or below. Avoid multiple freeze-thaw cycles.
Concentration	0.2 mg/ml (Please refer to the vial label for the specific concentration.)
Immunogen	Recombinant full-length human E-Cadherin protein
Purification	Protein A/G purified
Conjugation	Unconjugated



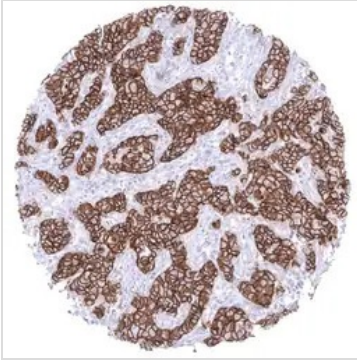
For full product information, images and publications, please visit our [website](#).

Date 2025 / 12 / 12 Page 1 of 2

For laboratory research use only. Not for any clinical, therapeutic, or diagnostic use in humans or animals. Not for animal or human consumption.

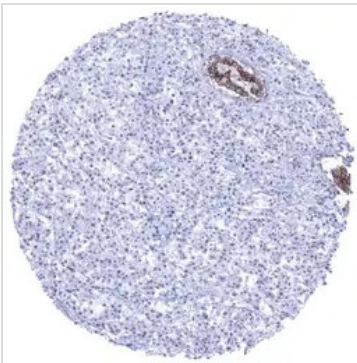
**Note**

Purchasers shall not, and agree not to enable third parties to, analyze, copy, reverse engineer or otherwise attempt to determine the structure or sequence of the product.

**DATA IMAGES**

**GTx04367 IHC-P Image**

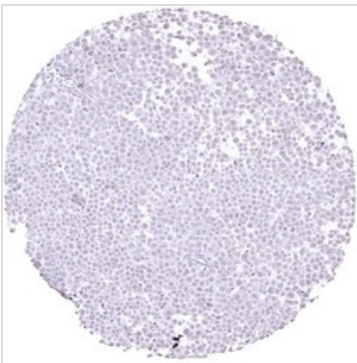
IHC-P analysis of human invasive breast cancer of no special type (NST) tissue using GTx04367 E-Cadherin antibody [MSVA-035R] HistoMAX™.

Strong membranous E-Cadherin staining in a breast cancer NST.


**GTx04367 IHC-P Image**

IHC-P analysis of human invasive lobular breast cancer (ILC) tissue using GTx04367 E-Cadherin antibody [MSVA-035R] HistoMAX™.

Absence of E-Cadherin staining in an invasive lobular breast cancer while normal breast glands show strong E cadherin positivity.


**GTx04367 IHC-P Image**

IHC-P analysis of human invasive lobular breast cancer (ILC) tissue using GTx04367 E-Cadherin antibody [MSVA-035R] HistoMAX™.

Absence of E-Cadherin staining in a lobular breast cancer.



For full product information, images and publications, please visit our [website](#).