

# Chromogranin A antibody [MSVA-380R] HistoMAX™

**Cat. No. GTX04370**

<b>Host</b>	Rabbit
<b>Clonality</b>	Monoclonal
<b>Isotype</b>	IgG
<b>Applications</b>	IHC-P
<b>Reactivity</b>	Human

References ( 1 )

Package

500 µl, 100 µl

## PRODUCT

This antibody was validated on 76 different Normal Tissues by IHC-P.

### Summary

[Go to Normal Tissue Gallery](#)

[Go to Cancer Tissue Gallery](#)

## Applications

### Application Note

\*Optimal dilutions/concentrations should be determined by the researcher.

Suggested dilution	Recommended dilution
IHC-P	1:100-1:200
<b>Note : Manual staining : Heat-induced antigen retrieval for 5 minutes in an autoclave at 121°C in pH 7.8 Tris-EDTA-based Target Retrieval Solution buffer. Based on the testing result, the pH 9.0 is optimal but pH 7.8 results in only slightly weaker stainings. At pH 6.0, the immunostaining is markedly reduced.</b>	

Not tested in other applications.

### Product Note

**Highly recommended for IHC-P in human tissues.**

## Properties

<b>Form</b>	Liquid
<b>Buffer</b>	PBS, 0.05% BSA (Please contact us for PBS only format)
<b>Preservative</b>	0.05% sodium azide
<b>Storage</b>	Store as concentrated solution. Centrifuge briefly prior to opening vial. For short-term storage (1-2 weeks), store at 4°C. For long-term storage, aliquot and store at -20°C or below. Avoid multiple freeze-thaw cycles.
<b>Concentration</b>	0.2 mg/ml (Please refer to the vial label for the specific concentration.)
<b>Immunogen</b>	Recombinant full-length human chromogranin A protein
<b>Purification</b>	Protein A/G purified
<b>Conjugation</b>	Unconjugated



For full product information, images and publications, please visit our [website](#).

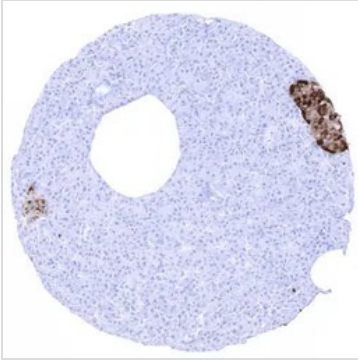
Date 2026 / 01 / 02 Page 1 of 2

For laboratory research use only. Not for any clinical, therapeutic, or diagnostic use in humans or animals. Not for animal or human consumption.

**Note**

Purchasers shall not, and agree not to enable third parties to, analyze, copy, reverse engineer or otherwise attempt to determine the structure or sequence of the product.

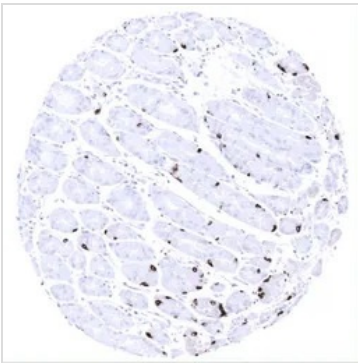
## DATA IMAGES



### GTx04370 IHC-P Image

IHC-P analysis of human pancreas tissue using GTx04370 Chromogranin A antibody [MSVA-380R] HistoMAX™.

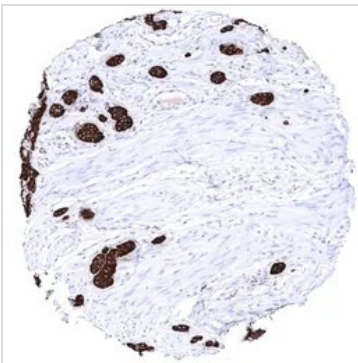
Islet cells of the pancreas show intense chromogranin A staining.



### GTx04370 IHC-P Image

IHC-P analysis of human gastric antrum glands tissue using GTx04370 Chromogranin A antibody [MSVA-380R] HistoMAX™.

Strong chromogranin A expression in scattered neuroendocrine cells of stomach antrum glands.



### GTx04370 IHC-P Image

IHC-P analysis of human appendiceal neuroendocrine tumor tissue using GTx04370 Chromogranin A antibody [MSVA-380R] HistoMAX™.

Neuroendocrine tumor of the appendix showing strong chromogranin A immunostaining.



For full product information, images and publications, please visit our [website](https://www.genetex.com).