

Mesothelin antibody [MSVA-235M] HistoMAX™

Cat. No. GTX04373

Host	Mouse
Clonality	Monoclonal
Isotype	IgG2b
Applications	IHC-P
Reactivity	Human

References (1)

Package

500 µl, 100 µl

PRODUCT

This antibody was validated on 76 different Normal Tissues by IHC-P.

Summary

[Go to Normal Tissue Gallery](#)[Go to Cancer Tissue Gallery](#)

Applications

Application Note

*Optimal dilutions/concentrations should be determined by the researcher.

Suggested dilution	Recommended dilution
--------------------	----------------------

IHC-P	1:100-1:200
-------	-------------

Note : Manual staining : Heat-induced antigen retrieval for 5 minutes in an autoclave at 121°C in pH 7.8 Tris-EDTA-based Target Retrieval Solution buffer. Based on the testing result, the pH 9.0 is optimal but pH 7.8 results in only slightly weaker stainings. At pH 6.0, the immunostaining is markedly reduced.

This antibody has been validated by Autostainer including Agilent/Dako - Autostainer Link 48, Bond RX-Lecia, and Roche-Ventana Discovery ULTRA. The detailed steps by Autostainer please refer to the [protocol](#).

Not tested in other applications.

Product Note	Highly recommended for IHC-P in human tissues.
--------------	--

Properties

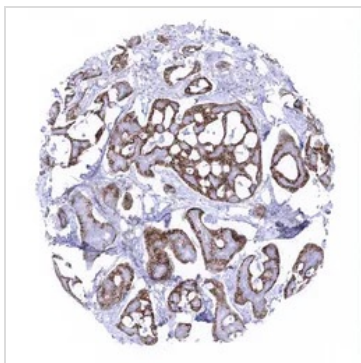
Form	Liquid
Buffer	PBS, 0.05% BSA (Please contact us for PBS only format)
Preservative	0.05% sodium azide
Storage	Store as concentrated solution. Centrifuge briefly prior to opening vial. For short-term storage (1-2 weeks), store at 4°C. For long-term storage, aliquot and store at -20°C or below. Avoid multiple freeze-thaw cycles.
Concentration	0.2 mg/ml (Please refer to the vial label for the specific concentration.)
Immunogen	Recombinant fragment (around aa 273-407) of human Mesothelin (MSLN) protein



For full product information, images and publications, please visit our [website](#).

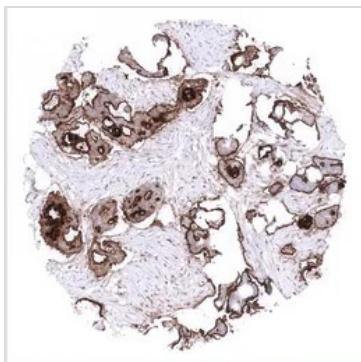
Date 2025 / 12 / 05 Page 1 of 2

Purification	Protein A/G purified
Conjugation	Unconjugated
Note	<p>For laboratory research use only. Not for any clinical, therapeutic, or diagnostic use in humans or animals. Not for animal or human consumption.</p> <p>Purchasers shall not, and agree not to enable third parties to, analyze, copy, reverse engineer or otherwise attempt to determine the structure or sequence of the product.</p>

DATA IMAGES

GTx04373 IHC-P Image

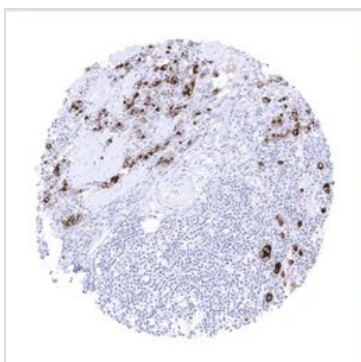
IHC-P analysis of human breast adenoid cystic carcinoma (ACC) tissue using GTx04373 Mesothelin antibody [MSVA-235M] HistoMAX™.

Adenoid cystic breast cancer with strong membranous mesothelin immunostaining in a subset of cells.


GTx04373 IHC-P Image

IHC-P analysis of human endometrioid ovarian cancer (EOVC) tissue using GTx04373 Mesothelin antibody [MSVA-235M] HistoMAX™.

Strong predominantly membranous mesothelin staining in an endometrioid ovarian cancer.


GTx04373 IHC-P Image

IHC-P analysis of human gastric cancer tissue using GTx04373 Mesothelin antibody [MSVA-235M] HistoMAX™.

Strong predominantly cytoplasmic mesothelin immunostaining in a stomach cancer with diffuse growth pattern.



For full product information, images and publications, please visit our [website](https://www.genetex.com).