

Cytokeratin 20 antibody [MSVA-620R] HistoMAX™

Cat. No. GTX04376

Host	Rabbit
Clonality	Monoclonal
Isotype	IgG
Applications	IHC-P
Reactivity	Human

References (1)

Package

500 µl, 100 µl

PRODUCT

This antibody was validated on 76 different Normal Tissues by IHC-P.

Summary

[Go to Normal Tissue Gallery](#)[Go to Cancer Tissue Gallery](#)

Applications

Application Note

*Optimal dilutions/concentrations should be determined by the researcher.

Suggested dilution	Recommended dilution
IHC-P	1:100-1:200

Note : Manual staining : Heat-induced antigen retrieval for 5 minutes in an autoclave at 121°C in pH 7.8 Tris-EDTA-based Target Retrieval Solution buffer. Based on the testing result, the pH 7.8 showed a strongest staining pattern. The pH 9.0 is acceptable but lower pH results in a significant deterioration of sensitivity

This antibody has been validated by Autostainer including Agilent/Dako - Autostainer Link 48, Bond RX-Lecia, and Roche-Ventana Discovery ULTRA. The detailed steps by Autostainer please refer to the [protocol](#).

Not tested in other applications.

Product Note **Highly recommended for IHC-P in human tissues.** Autostainer protocol information available

Properties

Form	Liquid
Buffer	PBS, 0.05% BSA (Please contact us for PBS only format)
Preservative	0.05% sodium azide
Storage	Store as concentrated solution. Centrifuge briefly prior to opening vial. For short-term storage (1-2 weeks), store at 4°C. For long-term storage, aliquot and store at -20°C or below. Avoid multiple freeze-thaw cycles.
Concentration	0.2 mg/ml (Please refer to the vial label for the specific concentration.)
Immunogen	Recombinant fragment of human KRT20 protein (around aa 196-323)

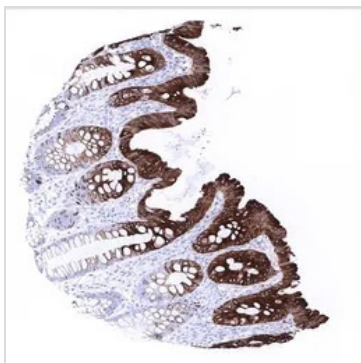


For full product information, images and publications, please visit our [website](#).

Date 2025 / 12 / 06 Page 1 of 2

Purification	Protein A/G purified
Conjugation	Unconjugated
Note	For laboratory research use only. Not for any clinical, therapeutic, or diagnostic use in humans or animals. Not for animal or human consumption. Purchasers shall not, and agree not to enable third parties to, analyze, copy, reverse engineer or otherwise attempt to determine the structure or sequence of the product.

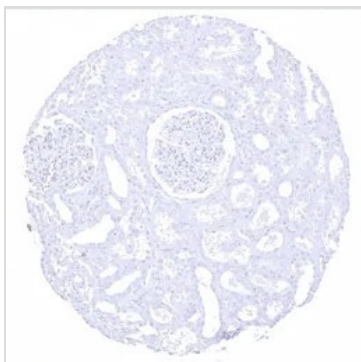
DATA IMAGES



GTx04376 IHC-P Image

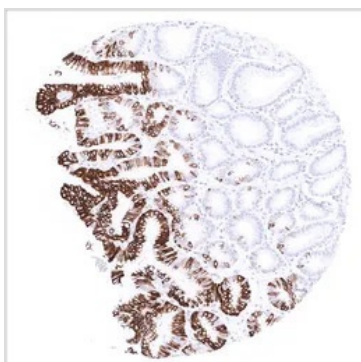
IHC-P analysis of human mucosa from descending colon tissue using GTx04376 Cytokeratin 20 antibody [MSVA-620R] HistoMAX™.

In the colon mucosa cytokeratin 20 staining is strongest at the surface epithelium and decreased towards the crypt base.



GTx04376 IHC-P Image

IHC-P analysis of human kidney tissue using GTx04376 Cytokeratin 20 antibody [MSVA-620R] HistoMAX™. Cytokeratin 20 staining is absent in the kidney.



GTx04376 IHC-P Image

IHC-P analysis of human gastric antrum tissue using GTx04376 Cytokeratin 20 antibody [MSVA-620R] HistoMAX™.

In the stomach, cytokeratin 20 immunostaining is preferentially seen in the cells of the surface epithelium while staining is absent in the deep glands.



For full product information, images and publications, please visit our [website](https://www.genetex.com).