

# Melanoma gp100 antibody [MSVA-617R] HistoMAX™

**Cat. No. GTX04382**

<b>Host</b>	Rabbit
<b>Clonality</b>	Monoclonal
<b>Isotype</b>	IgG
<b>Applications</b>	IHC-P
<b>Reactivity</b>	Human

## Package

500 µl, 100 µl

## PRODUCT

This antibody was validated on 76 different Normal Tissues by IHC-P.

## Summary

[Go to Normal Tissue Gallery](#)

[Go to Cancer Tissue Gallery](#)

## Applications

### Application Note

\*Optimal dilutions/concentrations should be determined by the researcher.

Suggested dilution	Recommended dilution
IHC-P	1:100-1:200
<b>Note : Manual staining : Heat-induced antigen retrieval for 5 minutes in an autoclave at 121°C in pH 7.8 Tris-EDTA-based Target Retrieval Solution buffer.</b>	
<b>This antibody has been validated by Autostainer including Agilent/Dako - Autostainer Link 48, Bond RX-Lecia, and Roche-Ventana Discovery ULTRA. The detailed steps by Autostainer please refer to the <a href="#">protocol</a>.</b>	

Not tested in other applications.

## Product Note

**Highly recommended for IHC-P in human tissues.** Autostainer protocol information available

## Properties

<b>Form</b>	Liquid
<b>Buffer</b>	PBS, 0.05% BSA (Please contact us for PBS only format)
<b>Preservative</b>	0.05% sodium azide
<b>Storage</b>	Store as concentrated solution. Centrifuge briefly prior to opening vial. For short-term storage (1-2 weeks), store at 4°C. For long-term storage, aliquot and store at -20°C or below. Avoid multiple freeze-thaw cycles.
<b>Concentration</b>	0.2 mg/ml (Please refer to the vial label for the specific concentration.)
<b>Immunogen</b>	Recombinant fragment of human SILV protein
<b>Purification</b>	Protein A/G purified



For full product information, images and publications, please visit our [website](#).

## Conjugation

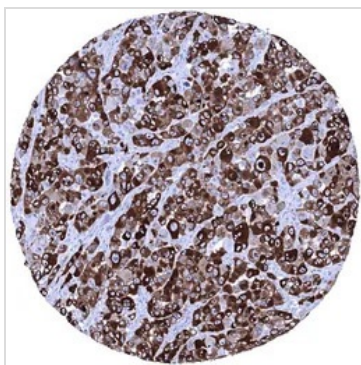
Unconjugated

## Note

For laboratory research use only. Not for any clinical, therapeutic, or diagnostic use in humans or animals. Not for animal or human consumption.

Purchasers shall not, and agree not to enable third parties to, analyze, copy, reverse engineer or otherwise attempt to determine the structure or sequence of the product.

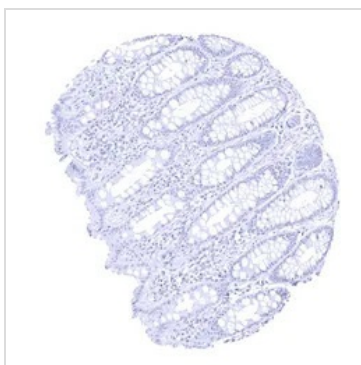
## DATA IMAGES



### GTx04382 IHC-P Image

IHC-P analysis of human malignant melanoma from skin tissue using GTx04382 Melanoma gp100 antibody [MSVA-617R] HistoMAX™.

Strong cytoplasmic melanoma gp100 immunostaining in all cells of a malignant melanoma of the skin.



### GTx04382 IHC-P Image

IHC-P analysis of human mucosa from rectum tissue using GTx04382 Melanoma gp100 antibody [MSVA-617R] HistoMAX™.



### GTx04382 IHC-P Image

IHC-P analysis of human skin tissue using GTx04382 Melanoma gp100 antibody [MSVA-617R] HistoMAX™. Strong melanoma gp100 immunostaining in melanocytes of the skin.



For full product information, images and publications, please visit our [website](#).