

# CD20 antibody [MSVA-020R] HistoMAX™

**Cat. No. GTX04392**

<b>Host</b>	Rabbit
<b>Clonality</b>	Monoclonal
<b>Isotype</b>	IgG
<b>Applications</b>	IHC-P
<b>Reactivity</b>	Human

## Package

500 µl, 100 µl

## PRODUCT

This antibody was validated on 76 different Normal Tissues by IHC-P.

## Summary

[Go to Normal Tissue Gallery](#)

[Go to Cancer Tissue Gallery](#)

## Applications

### Application Note

\*Optimal dilutions/concentrations should be determined by the researcher.

Suggested dilution	Recommended dilution
IHC-P	1:100-1:200
<p><b>Note : Manual staining : Heat-induced antigen retrieval for 5 minutes in an autoclave at 121°C in pH 7.8 Tris-EDTA-based Target Retrieval Solution buffer. Based on the testing result, the pH 9.0 is optimal but pH 7.8 results in only slightly weaker stainings. At pH 6.0, the immunostaining is markedly reduced.</b></p> <p><b>This antibody has been validated by Autostainer including Agilent/Dako - Autostainer Link 48 and BOND RX - Leica. The detailed steps by Autostainer please refer to the <a href="#">protocol</a>.</b></p>	

Not tested in other applications.

## Product Note

**Highly recommended for IHC-P in human tissues.**

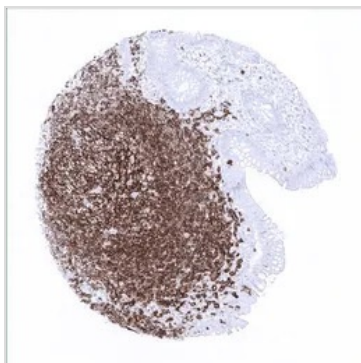
## Properties

<b>Form</b>	Liquid
<b>Buffer</b>	PBS, 0.05% BSA (Please contact us for PBS only format)
<b>Preservative</b>	0.05% sodium azide
<b>Storage</b>	Store as concentrated solution. Centrifuge briefly prior to opening vial. For short-term storage (1-2 weeks), store at 4°C. For long-term storage, aliquot and store at -20°C or below. Avoid multiple freeze-thaw cycles.
<b>Concentration</b>	0.2 mg/ml (Please refer to the vial label for the specific concentration.)
<b>Immunogen</b>	Recombinant human full-length MS4A1 protein



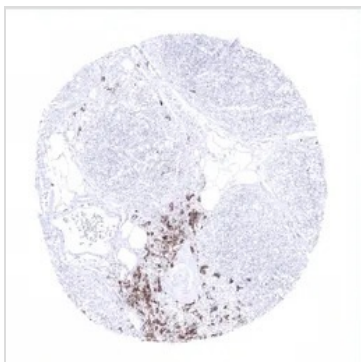
For full product information, images and publications, please visit our [website](#).

<b>Purification</b>	Protein A/G purified
<b>Conjugation</b>	Unconjugated
<b>Note</b>	<p>For laboratory research use only. Not for any clinical, therapeutic, or diagnostic use in humans or animals. Not for animal or human consumption.</p> <p>Purchasers shall not, and agree not to enable third parties to, analyze, copy, reverse engineer or otherwise attempt to determine the structure or sequence of the product.</p>

**DATA IMAGES**

**GTx04392 IHC-P Image**

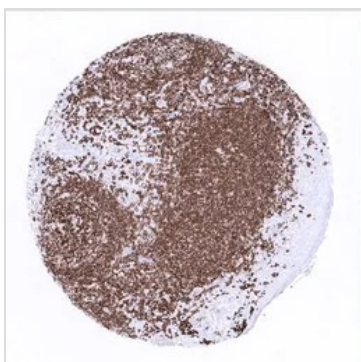
IHC-P analysis of human mucosa from appendix tissue using GTx04392 CD20 antibody [MSVA-020R] HistoMAX™.

Strong CD20 staining of a germinal centre in the appendix mucosa while epithelial cells are completely negative.


**GTx04392 IHC-P Image**

IHC-P analysis of human thymus tissue using GTx04392 CD20 antibody [MSVA-020R] HistoMAX™.

A relatively low fraction of CD20 positive B-lymphocytes.


**GTx04392 IHC-P Image**

IHC-P analysis of human tonsil tissue using GTx04392 CD20 antibody [MSVA-020R] HistoMAX™.

In the tonsil, many lymphocytes stain positive while the surface epithelium is CD20 negative.



For full product information, images and publications, please visit our [website](https://www.genetex.com).